

# **eTIR web services - Messages I15-I16**

## **I15 - Notify customs / I16 - Notification confirmation**



# Table of Contents

1. Document revision note	1
2. Related documents	1
3. Purpose	2
4. Target audience	2
5. Prerequisites	2
6. "I15 - Notify customs" / "I16 - Notification confirmation" messages	4
6.1. Sequence diagrams	4
6.1.1. Declaration	5
6.1.2. Seals	6
6.1.2.1. Triggered upon the reception of an I9 - Start TIR operation message	6
6.1.2.2. Triggered upon the reception of an I11 - Terminate TIR operation message	7
6.2. Message context	8
6.2.1. Message prerequisites	8
6.2.2. Endpoint URL and SOAP Action	8
6.3. "I15 - Notify customs" request message	9
6.3.1. Description	9
6.3.2. Field details	9
6.3.3. Field descriptions & usages	19
6.3.4. Referred code lists	35
6.3.5. Conditions and rules	35
6.3.6. How the national customs system should process the information received in the notification	36
6.3.7. Example	36
6.4. "I16 - Notification confirmation" response message	41
6.4.1. Description	41
6.4.2. Field details	41
6.4.3. Field descriptions & usages	41
6.4.4. Referred code lists	44
6.4.5. Conditions and rules	44
6.4.6. How the national customs system should prepare and send the notification confirmation	44
6.4.7. Applicable error codes	44
6.4.8. Example	46
7. Fallback procedures	48
8. Support and contact	50
9. Annexes	51
9.1. Version history	51
9.2. More examples	51
9.2.1. Example 1: Notification sent when starting a TIR operation	51
9.2.2. Example 2: Notification sent when terminating a TIR operation	53

# 1. Document revision note



This document has been published on **03/07/2025**, and is valid for the **eTIR international system version 1.0** based on the **eTIR specifications version 4.3.8**.

Please ensure you get the latest version of this document from the [eTIR documentation portal](#) or contact the eTIR service desk ([Support and contact](#)).

## 2. Related documents

### Project documents and collaboration platform

- eTIR documentation portal: <https://etir.org/documentation>
- Project guidelines for customs to connect to the eTIR international system : <https://etir.org/documentation/project-guidelines-customs>
- eTIR web services - Introduction document: <https://etir.org/documentation/introduction>
- eTIR web services - Messages I1-I2: I1 - Accept guarantee / I2 - Acceptance results <https://etir.org/documentation/i1-i2>
- eTIR web services - Messages I3-I4: I3 - Get holder information / I4 - Holder information <https://etir.org/documentation/i3-i4>
- eTIR web services - Messages I5-I6: I5 - Query guarantee / I6 - Query results <https://etir.org/documentation/i5-i6>
- eTIR web services - Messages I7-I8: I7 - Record declaration data / I8 - Record declaration data results <https://etir.org/documentation/i7-i8>
- eTIR web services - Messages I9-I10: I9 - Start TIR operation / I10 - Start results <https://etir.org/documentation/i9-i10>
- eTIR web services - Messages I11-I12: I11 - Terminate TIR operation / I12 - Termination results <https://etir.org/documentation/i11-i12>
- eTIR web services - Messages I13-I14: I13 - Discharge TIR operation / I14 - Discharge results <https://etir.org/documentation/i13-i14>
- eTIR web services - Messages I17-I18: I17 - Refusal to start TIR operation / I18 - Refusal results <https://etir.org/documentation/i17-i18>
- eTIR web services - Messages I19-I20: I19 - Check customs offices / I20 - Customs offices validation <https://etir.org/documentation/i19-i20>
- eTIR web services - Messages E1-E2: E1 - Register guarantee / E2 - Registration results <https://etir.org/documentation/e1-e2>
- eTIR web services - Messages E3-E4: E3 - Cancel guarantee / E4 - Cancellation results <https://etir.org/documentation/e3-e4>
- eTIR web services - Messages E5-E6: E5 - Query guarantee / E6 - Query results <https://etir.org/documentation/e5-e6>
- eTIR web services - Messages E7-E8: E7 - Notify guarantee chain / E8 - Notification confirmation <https://etir.org/documentation/e7-e8>
- eTIR web services - Messages E9-E10: E9 - Advance TIR data / E10 - Advance TIR data results <https://etir.org/documentation/e9-e10>
- eTIR web services - Messages E11-E12: E11 - Advance amendment data / E12 - Advance amendment data results <https://etir.org/documentation/e11-e12>
- eTIR web services - Messages E13-E14: E13 - Cancel advance data / E14 - Cancel advance data

results <https://etir.org/documentation/e13-e14>

## Legal framework

- TIR Convention handbook: <https://etir.org/documentation/tir-handbook>
- Annex 11 to the TIR Convention: <https://etir.org/documentation/annex-11>

## eTIR specifications

- Introduction to the eTIR conceptual, functional and technical v4.3: <https://etir.org/etir-introduction>
- eTIR concepts v4.3: <https://etir.org/etir-concepts>
- eTIR functional specifications v4.3: <https://etir.org/etir-functional-specifications>
- eTIR technical specifications v4.3: <https://etir.org/etir-technical-specifications>

## Additional resources

- eTIR XML schemas: <https://etir.org/documentation/xsd-files>
- eTIR code lists: <https://etir.org/documentation/code-lists>
- List of eTIR focal points: <https://unece.org/list-etir-focal-points>

# 3. Purpose

This document describes the **I15 - Notify customs** request message, and the **I16 - Notification confirmation** response message of the eTIR international system web services. It provides all the specifics required to use them (prepare or receive), explains how and when they should be used and explains the error codes that may be returned. It also contains examples and fallback procedures, if applicable.

# 4. Target audience

This guide is intended for the ICT team of all eTIR stakeholders in charge of interconnecting their information systems to the eTIR international system.

# 5. Prerequisites



In order to ensure an implementation that delivers the best value and services to the customs authorities, we recommend for the ICT team in charge of establishing the connection to the eTIR international system web services to be accompanied by a TIR subject matter expert.

This document is to be read after having an understanding of the [eTIR concepts](#) and having read the [eTIR functional specifications](#). It is highly recommended keeping the [eTIR web services introduction document](#) at hand as the current document refers to many elements and diagrams available in that document.

From a technical perspective, the following steps should have been completed at this point:

- A secured connection to the User Acceptance Testing (UAT) environment of the eTIR international system is established;
- The endpoint URL to the UAT environment is clearly identified and properly configured in the national customs systems;

- The national customs system notification endpoint URL has been communicated to the TIR secretariat, and is configured and accessible to the eTIR international system.
- The customs authorities fallback email address has been communicated to the TIR secretariat and configured in the eTIR international system.
- All the actions mentioned in the [prerequisites section](#) of the eTIR web services introduction document are performed;
- All the tools required to prepare, receive, test and troubleshoot the messages are ready.

## 6. "I15 - Notify customs" / "I16 - Notification confirmation" messages

### 6.1. Sequence diagrams

The following sequence diagrams highlight the role and sequence position of the **I15 - Notify customs** and **I16 - Notification confirmation** messages in the different contexts where they can be used during a TIR transport.



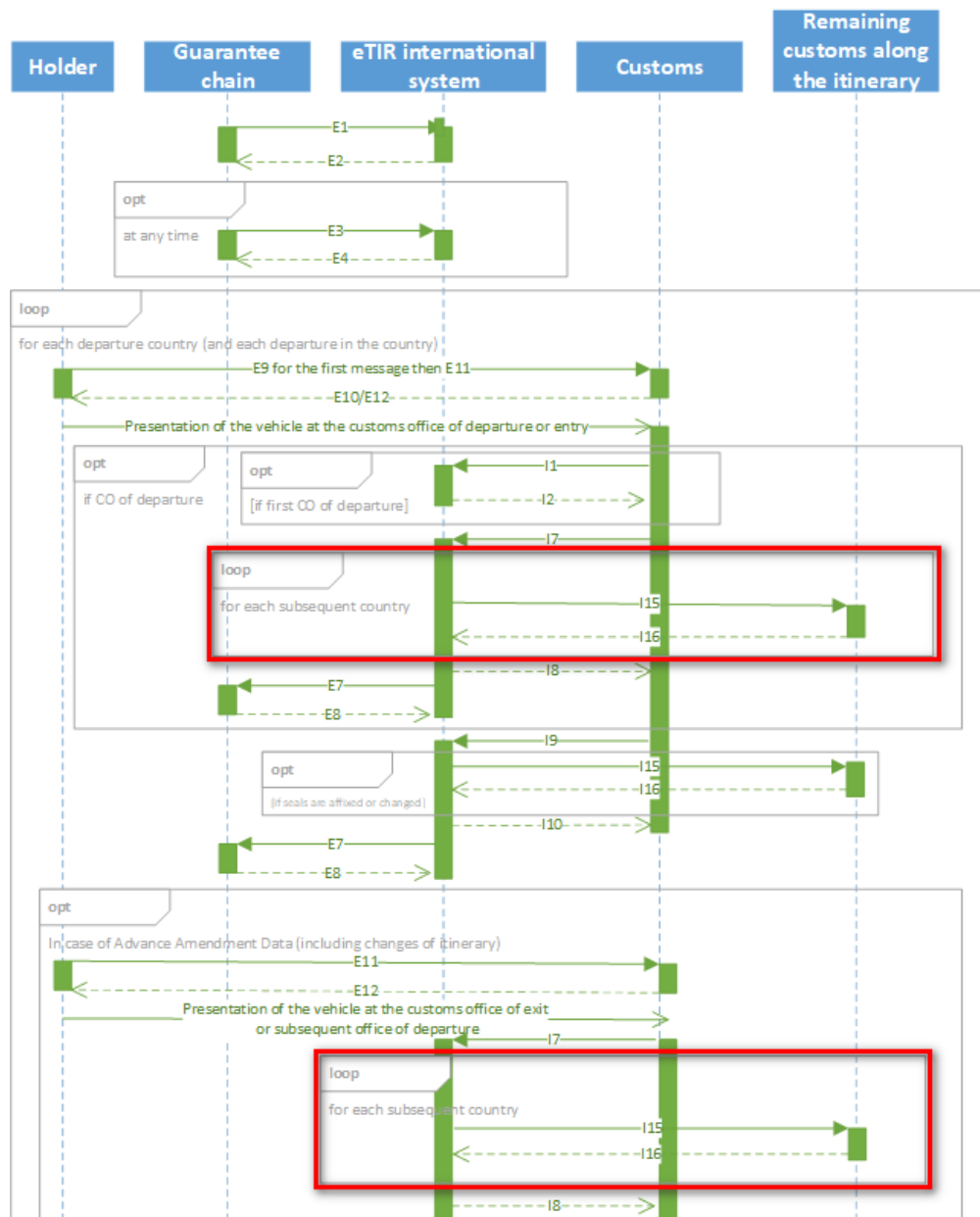
In the specific context of **I15 - Notify customs** / **I16 - Notification confirmation** messages, the eTIR international system sends the **I15 - Notify customs** request message to the national customs system which replies using the **I16 - Notification confirmation** response message. Customs authorities should be ready to receive and process this notification anytime. In addition, it is important to note that these notifications can be sent for several reasons and in different contexts.

In the eTIR specifications version 4.3.8, the **I15 - Notify customs** message can be sent by the eTIR international system in the following two cases which are further illustrated with the corresponding sequence diagrams below:

1. **Declaration:** when the declaration of a TIR transport is received for the first time by the eTIR international system or when it is subsequently updated along the itinerary.
2. **Seals:** when the seals of at least one of the transport equipment of the TIR transport are affixed for the first time or when they are changed during the TIR transport.



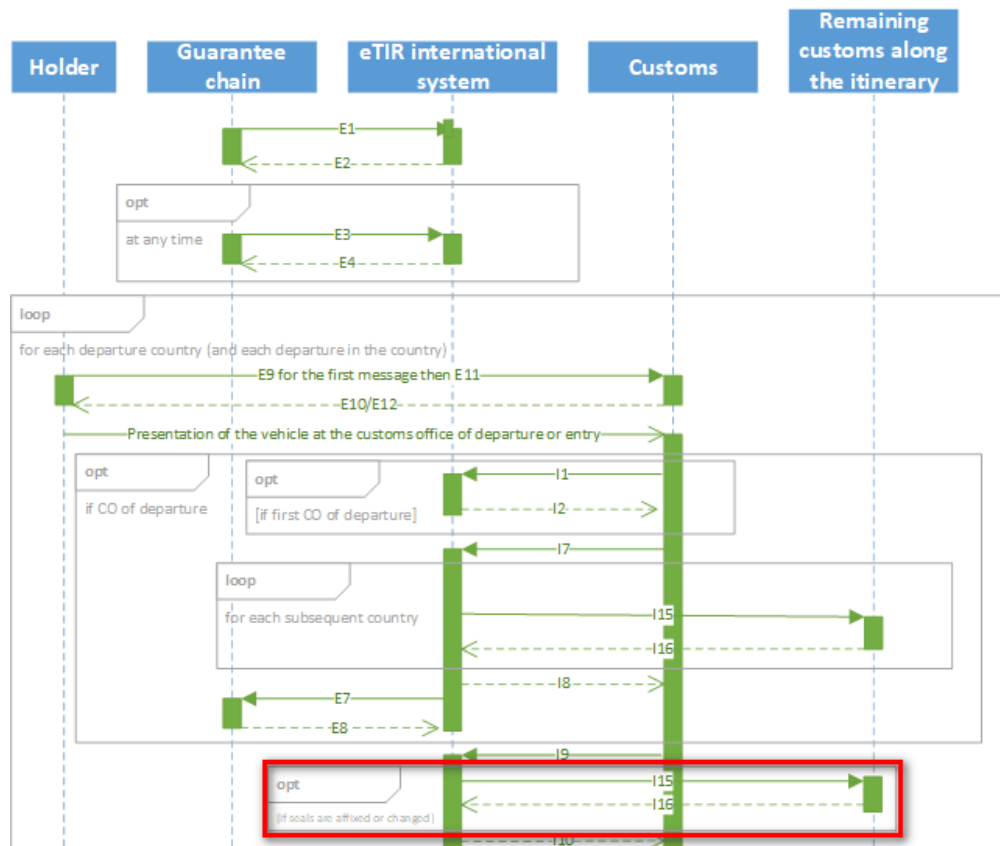
## 6.1.1. Declaration



When a customs office of departure (the first one or a subsequent loading point) sends the I7 - Record declaration data message, the eTIR international system forwards this declaration data to the remaining countries along the itinerary.

## 6.1.2. Seals

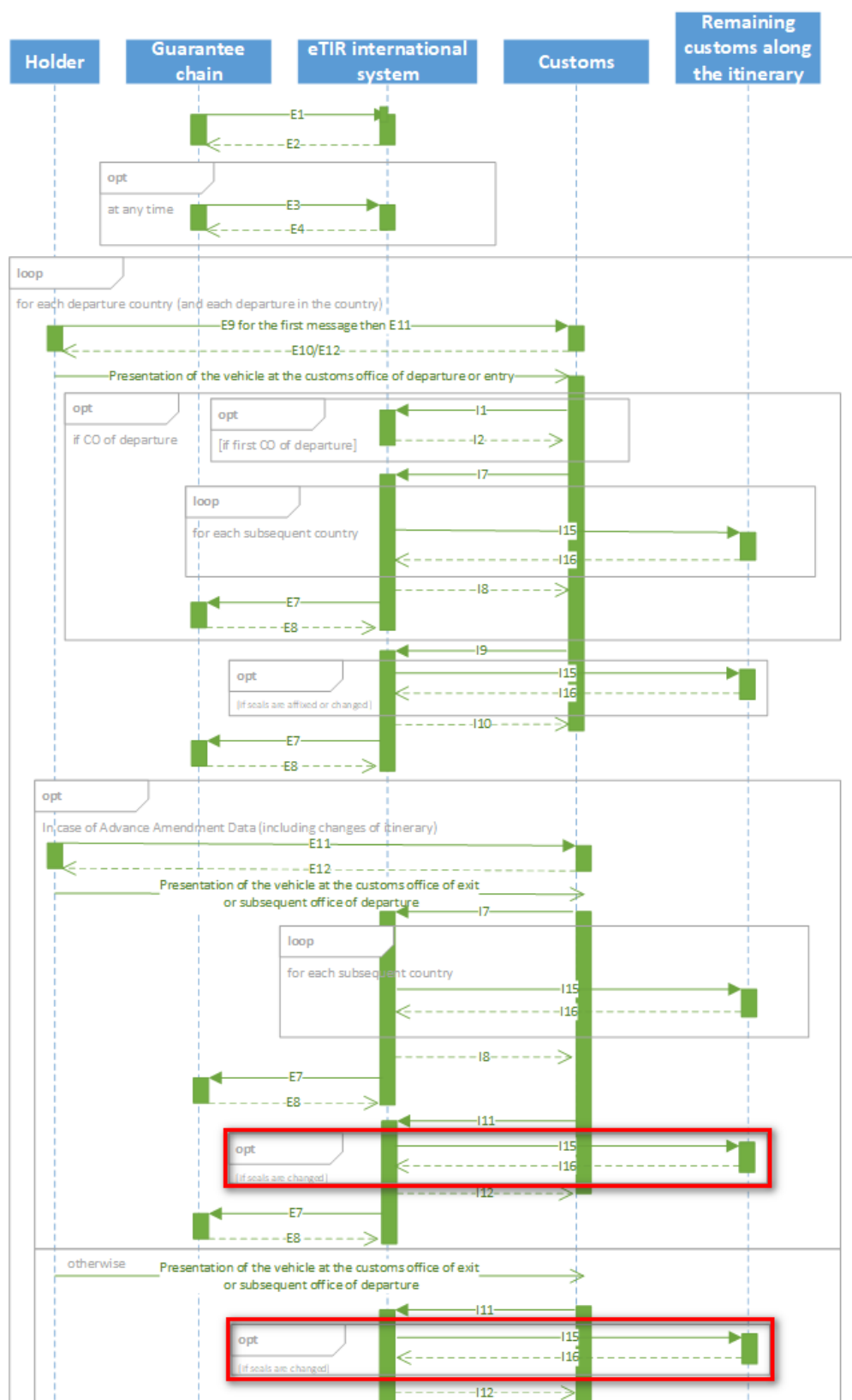
### 6.1.2.1. Triggered upon the reception of an I9 - Start TIR operation message



When seals are affixed for the first time at the initial customs office of departure or when seals are changed, following an inspection, when starting a TIR operation, the eTIR international system forwards the information about the new seals to the remaining countries along the itinerary.



### 6.1.2.2. Triggered upon the reception of an I11 - Terminate TIR operation message



When seals are changed, following an inspection, when terminating a TIR operation, the eTIR international system forwards the information about the new seals to the remaining countries along the itinerary.



The full eTIR sequence diagrams (Departure, Transit and Destination) are available in

the dedicated section of the [eTIR web services introduction document](#).

## 6.2. Message context

The **I15 - Notify customs** is an informational message sent by the eTIR international system to notify the customs authorities of the availability of new information related to a TIR transport. As a notification, it should be expected at anytime, and the contents of this message should be entirely processed.

### 6.2.1. Message prerequisites

The **I15 - Notify customs** message doesn't require any other message to be implemented prior its implementation.

### 6.2.2. Endpoint URL and SOAP Action

Since the **I15 - Notify customs** message is sent by the eTIR international system to the national customs system, it requires the national customs system endpoint URL to be configured in the eTIR international system to be properly communicated.

The SOAP action value to use is: **notificationConfirmation** (so the WS-Addressing element should be set to <http://etir.org/v4.3/toCustoms/notificationConfirmation>)

## 6.3. "I15 - Notify customs" request message

### 6.3.1. Description

The eTIR international system sends the **I15 - Notify customs** request message to the national customs system to notify customs authorities of the availability of new information.

The XSD file related to the **I15 - Notify customs** message is available at the following URL: [https://wiki.unece.org/download/attachments/106299941/WCO\\_eTIR\\_I15\\_1.xsd](https://wiki.unece.org/download/attachments/106299941/WCO_eTIR_I15_1.xsd).

### 6.3.2. Field details



Kindly note that the metadata fields have been removed from this table to improve the readability, as it is part of every eTIR message. You can find the details about these metadata fields in section 9.4 of the [eTIR introduction document](#).

eTIR field name	Mapping to the XML element (XPath)	Status	Cardinality	Format	Code lists	Conditions	Rules
MESSAGE							
└ Message function, coded	Function	R	1..1	n..2	CL16		
└ Message identifier	ID	R	1..1	an..70			
└ Type, coded	TypeCode	R	1..1	an..3	CL26		
└─ DECLARATIONDATA	Declaration	D	0..1			C010	
└ Issuing date time	Declaration/IssueDateTime	R	1..1	an..35			
└ Total gross weight	Declaration/TotalGrossMassMeasure	O	0..1	n..16,6			
└─ ADDITIONALINFORMATION	Declaration/AdditionalInformation	O	0..1				
└ Remarks	Declaration/AdditionalInformation/Content	R	1..1	an..512			
└─ AGENT	Declaration/Agent	O	0..1				
└ Name	Declaration/Agent/Name	D	0..1	an..70		C001	
└ Identifier	Declaration/Agent/ID	D	0..1	an..35		C001	
└ Role, coded	Declaration/Agent/RoleCode	R	1..1	an..3	CL02		
└─ ADDRESS	Declaration/Agent/Address	D	0..1			C001	
└ City name	Declaration/Agent/Address/CityName	R	1..1	an..35			
└ Country, coded	Declaration/Agent/Address/CountryCode	R	1..1	a2	CL04		
└ Street and number/P.O. Box	Declaration/Agent/Address/Line	R	1..1	an..256			
└ Postcode identification	Declaration/Agent/Address/PostcodeID	O	0..1	an..17			

eTIR field name	Mapping to the XML element (XPath)	Status	Cardinality	Format	Code lists	Conditions	Rules
AMENDMENT	Declaration/Amendment	O	0..*				
Type, coded	Declaration/Amendment/ChangeReasonCode	R	1..1	an..3	CL17		
POINTER	Declaration/Amendment/Pointer	R	1..1				
Sequence number	Declaration/Amendment/Pointer/SequenceNumeric	R	1..1	n..5			
Location	Declaration/Amendment/Pointer/Location	R	1..1	an..512			
SUBCONTRACTOR	Declaration/Carrier	O	0..*				
Name	Declaration/Carrier/Name	D	0..1	an..70		C001	
Identifier	Declaration/Carrier/ID	D	0..1	an..35		C001	
ADDRESS	Declaration/Carrier/Address	D	0..1			C001	
City name	Declaration/Carrier/Address/CityName	R	1..1	an..35			
Country, coded	Declaration/Carrier/Address/CountryCode	R	1..1	a2	CL04		
Street and number/P.O. Box	Declaration/Carrier/Address/Line	R	1..1	an..256			
Postcode identification	Declaration/Carrier/Address/PostcodeID	O	0..1	an..17			
CONSIGNMENT	Declaration/Consignment	O	0..*				
Container transport indicator	Declaration/Consignment/ContainerCode	R	1..1	an..3			
Sequence number	Declaration/Consignment/SequenceNumeric	R	1..1	n..5			
Heavy or bulky goods indicator	Declaration/Consignment/HeavyOrBulkyGoodsIndicator	R	1..1	an1			
ATTACHEDDOCUMENTS	Declaration/Consignment/AdditionalDocument	O	0..*				
Number	Declaration/Consignment/AdditionalDocument/ID	R	1..1	an..70			
Issuing date time	Declaration/Consignment/AdditionalDocument/IssueDateTim e	R	1..1	an..35			
Type, coded	Declaration/Consignment/AdditionalDocument/TypeCode	R	1..1	an..3	CL06		
BINARYFILE	Declaration/Consignment/AdditionalDocument/BinaryFile	O	0..1				
Identifier	Declaration/Consignment/AdditionalDocument/BinaryFile/I D	R	1..1	an..256			
Title	Declaration/Consignment/AdditionalDocument/BinaryFile/T itle	R	1..1	an..256			
Author name	Declaration/Consignment/AdditionalDocument/BinaryFile/A uthorName	O	0..1	an..70			
Version	Declaration/Consignment/AdditionalDocument/BinaryFile/V ersionID	O	0..1	an..17			
File name	Declaration/Consignment/AdditionalDocument/BinaryFile/F ileNameText	O	0..1	an..256			
URI	Declaration/Consignment/AdditionalDocument/BinaryFile/U RIID	O	0..1	an..2048			

eTIR field name	Mapping to the XML element (XPath)	Status	Cardinality	Format	Code lists	Conditions	Rules
⊢ MIME	Declaration/Consignment/AdditionalDocument/BinaryFile/MIMECode	O	0..1	an..70			
⊢ Encoding	Declaration/Consignment/AdditionalDocument/BinaryFile/EncodingCode	O	0..1	an..17			
⊢ Character set	Declaration/Consignment/AdditionalDocument/BinaryFile/CharacterSetCode	O	0..1	n..17			
⊢ Include binary object	Declaration/Consignment/AdditionalDocument/BinaryFile/IncludedBinaryObjectBinaryObject	O	0..1	NA			
⊢ Access	Declaration/Consignment/AdditionalDocument/BinaryFile/Access	O	0..1	an..256			
⊢ Description	Declaration/Consignment/AdditionalDocument/BinaryFile/Description	O	0..1	an..256			
⊢ Size	Declaration/Consignment/AdditionalDocument/BinaryFile/SizeMeasure	O	0..1	n..16,6			
⊢ Hash code	Declaration/Consignment/AdditionalDocument/BinaryFile/HashCode	O	0..1	an..256			
⊢ Hash code algorithm id	Declaration/Consignment/AdditionalDocument/BinaryFile/HashCodeAlgorithmIDCode	O	0..1	an..6			
⊢ CONSIGNMENTITEM	Declaration/Consignment/ConsignmentItem	R	1..*				
⊢ Sequence number	Declaration/Consignment/ConsignmentItem/SequenceNumeric	R	1..1	n..5			
⊢ ADDITIONALINFORMATION	Declaration/Consignment/ConsignmentItem/AdditionalInformation	O	0..*				
⊢ Remarks	Declaration/Consignment/ConsignmentItem/AdditionalInformation/Content	R	1..1	an..512			
⊢ GOODS	Declaration/Consignment/ConsignmentItem/Commodity	R	1..1				
⊢ Description	Declaration/Consignment/ConsignmentItem/Commodity/CargoDescription	D	0..1	an..256		C004	
⊢ CLASSIFICATION	Declaration/Consignment/ConsignmentItem/Commodity/Classification	O	0..*				R008
⊢ Code	Declaration/Consignment/ConsignmentItem/Commodity/Classification/ID	R	1..1	an..18			
⊢ Type, coded	Declaration/Consignment/ConsignmentItem/Commodity/Classification/IdentificationTypeCode	R	1..1	an..3			
⊢ CONSIGNEE	Declaration/Consignment/ConsignmentItem/Consignee	O	0..1				
⊢ Name	Declaration/Consignment/ConsignmentItem/Consignee/Name	D	0..1	an..70		C001	
⊢ Identifier	Declaration/Consignment/ConsignmentItem/Consignee/ID	D	0..1	an..35		C001	
⊢ ADDRESS	Declaration/Consignment/ConsignmentItem/Consignee/Address	D	0..1			C001	

eTIR field name	Mapping to the XML element (XPath)	Status	Cardinality	Format	Code lists	Conditions	Rules
City name	Declaration/Consignment/ConsignmentItem/Consignee/Address/CityName	R	1..1	an..35			
Country, coded	Declaration/Consignment/ConsignmentItem/Consignee/Address/CountryCode	R	1..1	a2	CL04		
Street and number/P.O. Box	Declaration/Consignment/ConsignmentItem/Consignee/Address/Line	R	1..1	an..256			
Postcode identification	Declaration/Consignment/ConsignmentItem/Consignee/Address/PostcodeID	O	0..1	an..17			
CONSIGNOR	Declaration/Consignment/ConsignmentItem/Consignor	O	0..1				
Name	Declaration/Consignment/ConsignmentItem/Consignor/Name	D	0..1	an..70		C001	
Identifier	Declaration/Consignment/ConsignmentItem/Consignor/ID	D	0..1	an..35		C001	
ADDRESS	Declaration/Consignment/ConsignmentItem/Consignor/Address	D	0..1			C001	
City name	Declaration/Consignment/ConsignmentItem/Consignor/Address/CityName	R	1..1	an..35			
Country, coded	Declaration/Consignment/ConsignmentItem/Consignor/Address/CountryCode	R	1..1	a2	CL04		
Street and number/P.O. Box	Declaration/Consignment/ConsignmentItem/Consignor/Address/Line	R	1..1	an..256			
Postcode identification	Declaration/Consignment/ConsignmentItem/Consignor/Address/PostcodeID	O	0..1	an..17			
DELIVERYDESTINATION	Declaration/Consignment/ConsignmentItem/DeliveryDestination	O	0..1				
Name	Declaration/Consignment/ConsignmentItem/DeliveryDestination/Name	R	1..1	an..70			
ADDRESS	Declaration/Consignment/ConsignmentItem/DeliveryDestination/Address	R	1..1				
City name	Declaration/Consignment/ConsignmentItem/DeliveryDestination/Address/CityName	R	1..1	an..35			
Country, coded	Declaration/Consignment/ConsignmentItem/DeliveryDestination/Address/CountryCode	R	1..1	a2	CL04		
Street and number/P.O. Box	Declaration/Consignment/ConsignmentItem/DeliveryDestination/Address/Line	R	1..1	an..256			
Postcode identification	Declaration/Consignment/ConsignmentItem/DeliveryDestination/Address/PostcodeID	O	0..1	an..17			
GOODSMEASURE	Declaration/Consignment/ConsignmentItem/GoodsMeasure	R	1..1				
Gross weight	Declaration/Consignment/ConsignmentItem/GoodsMeasure/GrossMassMeasure	R	1..1	n..16,6			



eTIR field name	Mapping to the XML element (XPath)	Status	Cardinality	Format	Code lists	Conditions	Rules
⊢ PACKAGING	Declaration/Consignment/ConsignmentItem/Packaging	R	1..*				
⊢ Sequence number	Declaration/Consignment/ConsignmentItem/Packaging/SequenceNumeric	R	1..1	n..5			
⊢ Marks and numbers	Declaration/Consignment/ConsignmentItem/Packaging/MarksNumbersID	D	0..1	an..512		C002	
⊢ Number of packages	Declaration/Consignment/ConsignmentItem/Packaging/QuantityQuantity	D	0..1	n..8		C002	
⊢ Type, coded	Declaration/Consignment/ConsignmentItem/Packaging/TypeCode	R	1..1	an..2	CL07		
⊢ TRANSPORTEQUIPMENT	Declaration/Consignment/ConsignmentItem/TransportEquipment	D	0..1			C003	
⊢ Identifier	Declaration/Consignment/ConsignmentItem/TransportEquipment/ID	R	1..1	an..17			
⊢ UCR	Declaration/Consignment/ConsignmentItem/UCR	O	0..1				
⊢ Identifier	Declaration/Consignment/ConsignmentItem/UCR/ID	R	1..1	an..35			
⊢ LOADINGLOCATION	Declaration/Consignment/LoadingLocation	O	0..1				
⊢ Name	Declaration/Consignment/LoadingLocation/Name	R	1..1	an..256			
⊢ NOTIFYPARTY	Declaration/Consignment/NotifyParty	O	0..1				
⊢ Name	Declaration/Consignment/NotifyParty/Name	D	0..1	an..70		C001	
⊢ Identifier	Declaration/Consignment/NotifyParty/ID	D	0..1	an..35		C001	
⊢ ADDRESS	Declaration/Consignment/NotifyParty/Address	D	0..1			C001	
⊢ City name	Declaration/Consignment/NotifyParty/Address/CityName	R	1..1	an..35			
⊢ Country, coded	Declaration/Consignment/NotifyParty/Address/CountryCode	R	1..1	a2	CL04		
⊢ Street and number/P.O. Box	Declaration/Consignment/NotifyParty/Address/Line	R	1..1	an..256			
⊢ Postcode identification	Declaration/Consignment/NotifyParty/Address/PostcodeID	O	0..1	an..17			
⊢ CUSTOMSOFFICEOFDEPARTURE	Declaration/Consignment/TransitDeparture	R	1..1				
⊢ Identifier	Declaration/Consignment/TransitDeparture/ID	R	1..1	an..35			
⊢ CUSTOMSOFFICEOFDESTINATION	Declaration/Consignment/TransitDestination	R	1..1				
⊢ Identifier	Declaration/Consignment/TransitDestination/ID	R	1..1	an..35			
⊢ TRANSPORTMEANS	Declaration/Consignment/TransitTransportMeans	R	1..*				R002
⊢ Identifier	Declaration/Consignment/TransitTransportMeans/ID	R	1..1	an..35			
⊢ Type, coded	Declaration/Consignment/TransitTransportMeans/TypeCode	R	1..1	an..4	CL05		
⊢ Nationality, coded	Declaration/Consignment/TransitTransportMeans/RegistrationNationalityCode	R	1..1	a2	CL04		
⊢ Conveyance reference number	Declaration/Consignment/TransitTransportMeans/JourneyID	O	0..1	an..17			

eTIR field name	Mapping to the XML element (XPath)	Status	Cardinality	Format	Code lists	Conditions	Rules
Sequence number	Declaration/Consignment/TransitTransportMeans/SequenceNumeric	R	1..1	n..5			R001
ITINERARY	Declaration/Consignment/TransitTransportMeans/Itinerary	R	1..*				
Sequence number	Declaration/Consignment/TransitTransportMeans/Itinerary/SequenceNumeric	R	1..1	n..5			
Country, coded	Declaration/Consignment/TransitTransportMeans/Itinerary/RoutingCountryCode	R	1..1	a2	CL04		
CUSTOMSOFFICE	Declaration/Consignment/TransitTransportMeans/Itinerary/ItineraryGovernmentOffice	R	1..*				C003
Identifier	Declaration/Consignment/TransitTransportMeans/Itinerary/ItineraryGovernmentOffice/ID	R	1..1	an..17			
Sequence number	Declaration/Consignment/TransitTransportMeans/Itinerary/ItineraryGovernmentOffice/SequenceNumeric	R	1..1	n..5			
Role, coded	Declaration/Consignment/TransitTransportMeans/Itinerary/ItineraryGovernmentOffice/RoleCode	R	1..1	an..3	CL31		
TRANSPORTEQUIPMENT	Declaration/Consignment/TransportEquipment	D	0..*			C003	C005
Sequence number	Declaration/Consignment/TransportEquipment/SequenceNumeric	R	1..1	n..5			
Size and type, coded	Declaration/Consignment/TransportEquipment/CharacteristicCode	R	1..1	an..10	CL01		
Identifier	Declaration/Consignment/TransportEquipment/ID	R	1..1	an..17			
CERTIFICATEOFAPPROVAL	Declaration/Consignment/TransportEquipment/AdditionalDocument	D	0..1			C005	
Number	Declaration/Consignment/TransportEquipment/AdditionalDocument/ID	R	1..1	an..70			
Issuing date time	Declaration/Consignment/TransportEquipment/AdditionalDocument/IssueDateTime	R	1..1	an..35			
Type, coded	Declaration/Consignment/TransportEquipment/AdditionalDocument/TypeCode	R	1..1	an..3	CL06		
BINARYFILE	Declaration/Consignment/TransportEquipment/AdditionalDocument/BinaryFile	O	0..1				
Identifier	Declaration/Consignment/TransportEquipment/AdditionalDocument/BinaryFile/ID	R	1..1	an..256			
Title	Declaration/Consignment/TransportEquipment/AdditionalDocument/BinaryFile/Title	R	1..1	an..256			
Author name	Declaration/Consignment/TransportEquipment/AdditionalDocument/BinaryFile/AuthorName	O	0..1	an..70			

eTIR field name	Mapping to the XML element (XPath)	Status	Cardinality	Format	Code lists	Conditions	Rules
Version	Declaration/Consignment/TransportEquipment/AdditionalDocument/BinaryFile/VersionID	O	0..1	an..17			
File name	Declaration/Consignment/TransportEquipment/AdditionalDocument/BinaryFile/FileNameText	O	0..1	an..256			
URI	Declaration/Consignment/TransportEquipment/AdditionalDocument/BinaryFile/URIID	O	0..1	an..2048			
MIME	Declaration/Consignment/TransportEquipment/AdditionalDocument/BinaryFile/MIMECode	O	0..1	an..70			
Encoding	Declaration/Consignment/TransportEquipment/AdditionalDocument/BinaryFile/EncodingCode	O	0..1	an..17			
Character set	Declaration/Consignment/TransportEquipment/AdditionalDocument/BinaryFile/CharacterSetCode	O	0..1	n..17			
Include binary object	Declaration/Consignment/TransportEquipment/AdditionalDocument/BinaryFile/IncludedBinaryObjectBinaryObject	O	0..1	NA			
Access	Declaration/Consignment/TransportEquipment/AdditionalDocument/BinaryFile/Access	O	0..1	an..256			
Description	Declaration/Consignment/TransportEquipment/AdditionalDocument/BinaryFile/Description	O	0..1	an..256			
Size	Declaration/Consignment/TransportEquipment/AdditionalDocument/BinaryFile/SizeMeasure	O	0..1	n..16,6			
Hash code	Declaration/Consignment/TransportEquipment/AdditionalDocument/BinaryFile/HashCode	O	0..1	an..256			
Hash code algorithm id	Declaration/Consignment/TransportEquipment/AdditionalDocument/BinaryFile/HashCodeAlgorithmIDCode	O	0..1	an..6			
SEAL	Declaration/Consignment/TransportEquipment/Seal	O	0..*				
Sequence number	Declaration/Consignment/TransportEquipment/Seal/SequenceNumeric	R	1..1	n..5			R003, R004
Seal number	Declaration/Consignment/TransportEquipment/Seal/ID	R	1..1	an..35			R005
Seal type, coded	Declaration/Consignment/TransportEquipment/Seal/TypeCode	O	0..1	an..3	CL08		
GUARANTEE	Declaration/DeclarationGuarantee	R	1..1				
Reference	Declaration/DeclarationGuarantee/ReferenceID	R	1..1	an..35			
HOLDER	Declaration/Principal	O	0..1				
Name	Declaration/Principal/Name	O	0..1	an..70			
Identifier	Declaration/Principal/ID	R	1..1	an..35			
ADDRESS	Declaration/Principal/Address	O	0..1				
City name	Declaration/Principal/Address/CityName	R	1..1	an..35			

eTIR field name	Mapping to the XML element (XPath)	Status	Cardinality	Format	Code lists	Conditions	Rules
└ Country, coded	Declaration/Principal/Address/CountryCode	R	1..1	a2	CL04		
└ Street and number/P.O. Box	Declaration/Principal/Address/Line	R	1..1	an..256			
└ Postcode identification	Declaration/Principal/Address/PostcodeID	O	0..1	an..17			
└ GUARANTEE	ObligationGuarantee	O	0..1				
└ Reference	ObligationGuarantee/ReferenceID	R	1..1	an..35			
└ TIROPERATION	ObligationGuarantee/TransitOperation	D	0..*			C010	
└ Sequence number	ObligationGuarantee/TransitOperation/SequenceNumeric	R	1..1	n..5			
└ Registration number	ObligationGuarantee/TransitOperation/RegistrationID	R	1..1	an..35			
└ START	ObligationGuarantee/TransitOperation/OperationStart	O	0..1				
└ End date time	ObligationGuarantee/TransitOperation/OperationStart/InspectionEndDateTime	R	1..1	an..35			
└ Time limit date time	ObligationGuarantee/TransitOperation/OperationStart/LimitDateTime	O	0..1	an..35			
└ ADDITIONALINFORMATION	ObligationGuarantee/TransitOperation/OperationStart/AdditionalInformation	O	0..1				
└ Remarks	ObligationGuarantee/TransitOperation/OperationStart/AdditionalInformation/Content	R	1..1	an..512			
└ CONSIGNMENT	ObligationGuarantee/TransitOperation/OperationStart/Consignment	O	0..1				R007, R006
└ TRANSPORTEQUIPMENT	ObligationGuarantee/TransitOperation/OperationStart/Consignment/TransportEquipment	R	1..*				
└ Identifier	ObligationGuarantee/TransitOperation/OperationStart/Consignment/TransportEquipment/ID	R	1..1	an..17			
└ SEAL	ObligationGuarantee/TransitOperation/OperationStart/Consignment/TransportEquipment/Seal	R	1..*				
└ Sequence number	ObligationGuarantee/TransitOperation/OperationStart/Consignment/TransportEquipment/Seal/SequenceNumeric	R	1..1	n..5			R003, R004
└ Seal number	ObligationGuarantee/TransitOperation/OperationStart/Consignment/TransportEquipment/Seal/ID	R	1..1	an..35			R005
└ Seal type, coded	ObligationGuarantee/TransitOperation/OperationStart/Consignment/TransportEquipment/Seal/TypeCode	O	0..1	an..3	CL08		
└ CONTROL	ObligationGuarantee/TransitOperation/OperationStart/Control	R	1..1				
└ Type, coded	ObligationGuarantee/TransitOperation/OperationStart/Control/TypeCode	R	1..1	an..3	CL25		
└ CONTROLRESULT	ObligationGuarantee/TransitOperation/OperationStart/Control/ControlResult	R	1..1				

eTIR field name	Mapping to the XML element (XPath)	Status	Cardinality	Format	Code lists	Conditions	Rules
↳ Result, coded	ObligationGuarantee/TransitOperation/OperationStart/Control/ControlResult/ID	R	1..1	an..3	CL24		
↳ NATIONALITINERARY	ObligationGuarantee/TransitOperation/OperationStart/Itinerary	O	0..1				
↳ NATIONALITINERARYCUSTOMSOFFICE	ObligationGuarantee/TransitOperation/OperationStart/Itinerary/ItineraryGovernmentOffice	R	1..1				
↳ Identifier	ObligationGuarantee/TransitOperation/OperationStart/Itinerary/ItineraryGovernmentOffice/ID	R	1..1	an..17			
↳ CUSTOMSOFFICE	ObligationGuarantee/TransitOperation/OperationStart/TransitOperationStartOffice	R	1..1				
↳ Identifier	ObligationGuarantee/TransitOperation/OperationStart/TransitOperationStartOffice/ID	R	1..1	an..17			
↳ TERMINATION	ObligationGuarantee/TransitOperation/OperationTermination	O	0..1				
↳ End date time	ObligationGuarantee/TransitOperation/OperationTermination/InspectionEndTime	R	1..1	an..35			
↳ Number of packages	ObligationGuarantee/TransitOperation/OperationTermination/PackageQuantityQuantity	R	1..1	n..8			
↳ Termination type, coded	ObligationGuarantee/TransitOperation/OperationTermination/TypeCode	R	1..1	an..3	CL27		
↳ ADDITIONALINFORMATION	ObligationGuarantee/TransitOperation/OperationTermination/AdditionalInformation	O	0..1				
↳ Reservations	ObligationGuarantee/TransitOperation/OperationTermination/AdditionalInformation/Content	R	1..1	an..512			
↳ CONSIGNMENT	ObligationGuarantee/TransitOperation/OperationTermination/Consignment	O	0..1				R007, R006
↳ TRANSPORTEQUIPMENT	ObligationGuarantee/TransitOperation/OperationTermination/Consignment/TransportEquipment	R	1..*				
↳ Identifier	ObligationGuarantee/TransitOperation/OperationTermination/Consignment/TransportEquipment/ID	R	1..1	an..17			
↳ SEAL	ObligationGuarantee/TransitOperation/OperationTermination/Consignment/TransportEquipment/Seal	R	1..*				
↳ Sequence number	ObligationGuarantee/TransitOperation/OperationTermination/Consignment/TransportEquipment/Seal/SequenceNumeric	R	1..1	n..5			R003, R004
↳ Seal number	ObligationGuarantee/TransitOperation/OperationTermination/Consignment/TransportEquipment/Seal/ID	R	1..1	an..35			R005
↳ Seal type, coded	ObligationGuarantee/TransitOperation/OperationTermination/Consignment/TransportEquipment/Seal/TypeCode	O	0..1	an..3	CL08		

eTIR field name	Mapping to the XML element (XPath)	Status	Cardinality	Format	Code lists	Conditions	Rules
└─ CONTROL	ObligationGuarantee/TransitOperation/OperationTermination/Control	R	1..1				
└─ Type, coded	ObligationGuarantee/TransitOperation/OperationTermination/Control/TypeCode	R	1..1	an..3	CL25		
└─ CONTROLRESULT	ObligationGuarantee/TransitOperation/OperationTermination/Control/ControlResult	R	1..1				
└─ Result, coded	ObligationGuarantee/TransitOperation/OperationTermination/Control/ControlResult/ID	R	1..1	an..3	CL24		
└─ CUSTOMSOFFICE	ObligationGuarantee/TransitOperation/OperationTermination/TransitOperationTerminationOffice	R	1..1				
└─ Identifier	ObligationGuarantee/TransitOperation/OperationTermination/TransitOperationTerminationOffice/ID	R	1..1	an..17			
└─ DISCHARGE	ObligationGuarantee/TransitOperation/OperationDischarge	O	0..1				
└─ End date time	ObligationGuarantee/TransitOperation/OperationDischarge/InspectionEndDateTime	R	1..1	an..35			
└─ CUSTOMSOFFICE	ObligationGuarantee/TransitOperation/OperationDischarge/TransitOperationDischargeOffice	R	1..1				
└─ Identifier	ObligationGuarantee/TransitOperation/OperationDischarge/TransitOperationDischargeOffice/ID	R	1..1	an..17			
└─ REFUSALTOSTART	ObligationGuarantee/TransitOperation/RefusalToStart	O	0..1				
└─ End date time	ObligationGuarantee/TransitOperation/RefusalToStart/InspectionEndDateTime	R	1..1	an..35			
└─ ADDITIONALINFORMATION	ObligationGuarantee/TransitOperation/RefusalToStart/AdditionalInformation	R	1..1				
└─ Reason	ObligationGuarantee/TransitOperation/RefusalToStart/AdditionalInformation/Content	R	1..1	an..512			
└─ CONTROL	ObligationGuarantee/TransitOperation/RefusalToStart/Control	O	0..1				
└─ Type, coded	ObligationGuarantee/TransitOperation/RefusalToStart/Control/TypeCode	R	1..1	an..3	CL25		
└─ CONTROLRESULT	ObligationGuarantee/TransitOperation/RefusalToStart/Control/ControlResult	R	1..1				
└─ Result, coded	ObligationGuarantee/TransitOperation/RefusalToStart/Control/ControlResult/ID	R	1..1	an..3	CL24		
└─ CUSTOMSOFFICE	ObligationGuarantee/TransitOperation/RefusalToStart/TransitOperationStartOffice	R	1..1				
└─ Identifier	ObligationGuarantee/TransitOperation/RefusalToStart/TransitOperationStartOffice/ID	R	1..1	an..17			



### 6.3.3. Field descriptions & usages



Kindly note that the metadata fields have been removed from this table to improve the readability, as it is part of every eTIR message. You can find the details about these metadata fields in section 9.4 of the [eTIR introduction document](#).

eTIR field name	Mapping to the XML element (XPath)	Description	Usage
MESSAGE			
Message function, coded	Function	Code describing the function of the message	The value should be, depending on the type of notification, either: '69' (New declaration data), '96' (Update declaration data), '98' (Seals information when starting a TIR operation) or '99' (Seals information when terminating a TIR operation). Those codes will soon be included in the CL16 - Message function code (UN/EDIFACT 1225) code list.
Message identifier	ID	Unique identifier of the message	The value should be a Globally Unique Identifier (GUID) as detailed in the dedicated section of the introduction document
Type, coded	TypeCode	Code of the message type	The value should be set to 'I15'
DECLARATIONDATA	Declaration	Class representing the declaration data as accepted by customs	
Issuing date time	Declaration/IssueDateTime	Date at which the message E9 (or E11) received by the customs, was issued	The value should be the one from the 'Issuing date' attribute of the message E9 received by the customs
Total gross weight	Declaration/TotalGrossMassMeasure	Total gross weight of goods (including packaging) of the declaration	The value should be the total gross weight as a decimal number. The unit should be defined in the Measure Unit. Code attribute and should match one of the values listed in the list Measurement unit code (UNECE Recommendation 20)
ADDITIONALINFORMATION	Declaration/AdditionalInformation	Class containing potential additional information at the declaration level	
Remarks	Declaration/AdditionalInformation/Content	Text used to allow for remarks to the declaration from the TIR Carnet holder	The value should be containing the remarks to the declaration from the transporter, or remains blank if there are none
AGENT	Declaration/Agent	Class representing the potential agent which would declare the goods on behalf of the TIR Carnet holder	
Name	Declaration/Agent/Name	Name of the agent	The value should be the official company name, or the first and last name of the person in case of physical person, to allow for quick identification

eTIR field name	Mapping to the XML element (XPath)	Description	Usage
Identifier	Declaration/Agent/ID	Unique identifier of the agent	The value should be the unique identifier of the agent
Role, coded	Declaration/Agent/RoleCode	Code of the role of the agent	The value should be the code matching the role of the agent from the list Party role code (UN/EDIFACT 3035)
ADDRESS	Declaration/Agent/Address	Class representing the physical address of the Agent	
City name	Declaration/Agent/Address/CityName	City name of the physical address of the agent	The value should be the city name of the physical address of the agent
Country, coded	Declaration/Agent/Address/CountryCode	Code of the country of the physical address of the agent	The value should be the code of the country of the physical address of the agent from the list Country name code (ISO 3166-1-alpha-2)
Street and number/P.O. Box	Declaration/Agent/Address/Line	Street name of the physical address of the agent	The value should be the street name and number (or equivalent) of the physical address of the agent
Postcode identification	Declaration/Agent/Address/PostcodeID	Postal/Zip code of the physical address of the agent	The value should be the postal/ZIP code of the physical address of the agent
AMENDMENT	Declaration/Amendment	Class representing the list of potential amendments to the declaration	
Type, coded	Declaration/Amendment/ChangeReasonCode	Code describing the type of amendment	The value should be the code matching the type of amendment from the list Amendment type code (eTIR)
POINTER	Declaration/Amendment/Pointer	Class representing the pointer to the part of the declaration to be amended	
Sequence number	Declaration/Amendment/Pointer/SequenceNumeric	Index of the pointer in the list	The value should be the 1-based index of the pointer in the list
Location	Declaration/Amendment/Pointer/Location	Location of the class or attribute to be amended	The value should be the location of the class or attribute following the XPath syntax
SUBCONTRACTOR	Declaration/Carrier	Class representing the potential agent which undertakes or arranges transport of goods between named points	
Name	Declaration/Carrier/Name	Name of the subcontractor	The value should be the official company name, or the first and last name of the person in case of physical person, to allow for quick identification
Identifier	Declaration/Carrier/ID	Unique identifier of the subcontractor	The value should be the unique identifier of the subcontractor
ADDRESS	Declaration/Carrier/Address	Class representing the physical address of the subcontractor	
City name	Declaration/Carrier/Address/CityName	City name of the physical address of the subcontractor	The value should be the city name of the physical address of the subcontractor

eTIR field name	Mapping to the XML element (XPath)	Description	Usage
Country, coded	Declaration/Carrier/Address/CountryCode	Code of the country of the physical address of the subcontractor	The value should be the code of the country of the physical address of the subcontractor from the list Country name code (ISO 3166-1-alpha-2)
Street and number/P.O. Box	Declaration/Carrier/Address/Line	Street name of the physical address of the subcontractor	The value should be the street name and number (or equivalent) of the physical address of the subcontractor
Postcode identification	Declaration/Carrier/Address/PostcodeID	Postal/Zip code of the physical address of the subcontractor	The value should be the postal/ZIP code of the physical address of the subcontractor
CONSIGNMENT	Declaration/Consignment	Class representing the list of details on the transport of goods between a loading point and an unloading point	
Container transport indicator	Declaration/Consignment/ContainerCode	Code describing whether the goods are transported in a container or not	The value should be '68' if the goods are transported in a container or '69' otherwise
Sequence number	Declaration/Consignment/SequenceNumeric	Index of the consignment in the list	The value should be the 1-based index of the consignment in the list
Heavy or bulky goods indicator	Declaration/Consignment/HeavyOrBulkyGoodsIndicator	Code describing whether the goods are considered (according to article 29) as 'heavy or bulky', as defined article 1 (p) of the TIR Convention.	The value should be '1' if the goods are considered by the customs as 'heavy or bulky' or '0' otherwise
ATTACHEDDOCUMENTS	Declaration/Consignment/AdditionalDocument	Class representing the list of potential additional documents supplied as part of the declaration and related to the consignment	
Number	Declaration/Consignment/AdditionalDocument/ID	Identifier of the document	The value should be an ID identifying the document and it should be unique among all other attached documents of the declaration
Issuing date time	Declaration/Consignment/AdditionalDocument/IssueDateTim e	Issuing date and time of the document	The value should be a date and time to be provided following the EDIFACT 208 format CCYYMMDDHHMMSSZHHMM. For Example: 20200820145600+0100 represents 20 August 2020 at 14:56 UTC+01:00
Type, coded	Declaration/Consignment/AdditionalDocument/TypeCode	Code of the type of the document	The value should be the code of the type of the document from the list Document name code (UN/EDIFACT 1001)
BINARYFILE	Declaration/Consignment/AdditionalDocument/BinaryFile	Class representing the content of the document	
Identifier	Declaration/Consignment/AdditionalDocument/BinaryFile/I D	Unique identifier of the file representing the document	The value should be an ID identifying the file and it should be unique among all other binary files of the declaration
Title	Declaration/Consignment/AdditionalDocument/BinaryFile/T itle	Title of the document	The value should be the title of the document

eTIR field name	Mapping to the XML element (XPath)	Description	Usage
⊢ Author name	Declaration/Consignment/AdditionalDocument/BinaryFile/A uthorName	Name of the author of the document	The value should be the first and last name of the author of the document
⊢ Version	Declaration/Consignment/AdditionalDocument/BinaryFile/V ersionID	Version number of the document	The value should be the version of the document
⊢ File name	Declaration/Consignment/AdditionalDocument/BinaryFile/F ileNameText	File name of the document	The value should be the name of the file representing the document, including the extension
⊢ URI	Declaration/Consignment/AdditionalDocument/BinaryFile/U RIID	URI of the document	The value should be the Unique Resource Identifier (URI) allowing to access the document instead of relying on a binary object representation
⊢ MIME	Declaration/Consignment/AdditionalDocument/BinaryFile/M IMECode	Code of the MIME type of the file	The value should be one of the MIME types as listed by the IANA organization
⊢ Encoding	Declaration/Consignment/AdditionalDocument/BinaryFile/E ncodingCode	Code of the encoding algorithm of the file	The value should be the type of encoding algorithm used to encode the file
⊢ Character set	Declaration/Consignment/AdditionalDocument/BinaryFile/C haracterSetCode	Code of the character set of the file	The value should be the character set used in case the file is a text file
⊢ Include binary object	Declaration/Consignment/AdditionalDocument/BinaryFile/I ncludedBinaryObjectBinaryObject	Binary representation of the file	The value should be the content of the file represented using the characteristics mentioned in the other attributes (EncodingCode and CharacterSetCode)
⊢ Access	Declaration/Consignment/AdditionalDocument/BinaryFile/A ccess	Access information of the file	The value should be the information needed to access the file, such as security and download parameters. This is only useful when the file is accessible using the URIID parameter
⊢ Description	Declaration/Consignment/AdditionalDocument/BinaryFile/D escription	Description of the document	The value should be the description of the document and explain what it contains
⊢ Size	Declaration/Consignment/AdditionalDocument/BinaryFile/S izeMeasure	Size of the file	The value should be the size of the file. The unit should be defined in the Measure Unit. Code attribute and should match one of the values listed in the Measurement unit code (UNECE Recommendation 20)
⊢ Hash code	Declaration/Consignment/AdditionalDocument/BinaryFile/H ashCode	Hash value of the file	The value should be the hash code string that resulted from hashing the attached file to be used for file reception validation
⊢ Hash code algorithm id	Declaration/Consignment/AdditionalDocument/BinaryFile/H ashCodeAlgorithmIDCode	Code of the hash algorithm	The value should be the short name of the algorithm used to compute the hash value of the file
⊢ CONSIGNMENTITEM	Declaration/Consignment/ConsignmentItem	Class representing the list of details on the items in the consignment	

eTIR field name	Mapping to the XML element (XPath)	Description	Usage
Sequence number	Declaration/Consignment/ConsignmentItem/SequenceNumeric	Index of the consignment item in the list	The value should be the 1-based index of the consignment item in the list, allowing for quick physical identification upon inspection
ADDITIONALINFORMATION	Declaration/Consignment/ConsignmentItem/AdditionalInformation	Class representing the list of potential additional information at the consignment item level	
Remarks	Declaration/Consignment/ConsignmentItem/AdditionalInformation/Content	Remarks on the consignment item	The value should be a text allowing for additional remarks on the consignment item
GOODS	Declaration/Consignment/ConsignmentItem/Commodity	Class representing the details on the goods	
Description	Declaration/Consignment/ConsignmentItem/Commodity/CargoDescription	Description of the goods	The value should be a text describing the goods
CLASSIFICATION	Declaration/Consignment/ConsignmentItem/Commodity/Classification	Class representing the list of classification details of the goods	
Code	Declaration/Consignment/ConsignmentItem/Commodity/Classification/ID	Identifier of the classification of the goods	The value should be the identifier of the non-commercial classification of the goods
Type, coded	Declaration/Consignment/ConsignmentItem/Commodity/Classification/IdentificationTypeCode	Code of the classification	The value should be the code of the classification from the list Item type identification code (UN/EDIFACT 7143)
CONSIGNEE	Declaration/Consignment/ConsignmentItem/Consignee	Class representing the potential consignee of the goods	
Name	Declaration/Consignment/ConsignmentItem/Consignee/Name	Name of the consignee	The value should be the official company name, or the first and last name of the person in case of physical person, to allow for quick identification
Identifier	Declaration/Consignment/ConsignmentItem/Consignee/ID	Unique identifier of the consignee	The value should be the unique identifier of the consignee
ADDRESS	Declaration/Consignment/ConsignmentItem/Consignee/Address	Class representing the physical address of the consignee	
City name	Declaration/Consignment/ConsignmentItem/Consignee/Address/CityName	City name of the physical address of the consignee	The value should be the city name of the physical address of the consignee
Country, coded	Declaration/Consignment/ConsignmentItem/Consignee/Address/CountryCode	Code of the country of the physical address of the consignee	The value should be the code of the country of the physical address of the consignee from the list Country name code (ISO 3166-1-alpha-2)
Street and number/P.O. Box	Declaration/Consignment/ConsignmentItem/Consignee/Address/Line	Street name of the physical address of the consignee	The value should be the street name and number (or equivalent) of the physical address of the consignee
Postcode identification	Declaration/Consignment/ConsignmentItem/Consignee/Address/PostcodeID	Postal/Zip code of the physical address of the consignee	The value should be the postal/ZIP code of the physical address of the consignee
CONSIGNOR	Declaration/Consignment/ConsignmentItem/Consignor	Class representing the potential consignor of the goods	

eTIR field name	Mapping to the XML element (XPath)	Description	Usage
⊢ Name	Declaration/Consignment/ConsignmentItem/Consignor/Name	Name of the consignor	The value should be the official company name, or the first and last name of the person in case of physical person, to allow for quick identification
⊢ Identifier	Declaration/Consignment/ConsignmentItem/Consignor/ID	Unique identifier of the consignor	The value should be the unique identifier of the consignor
⊢ ADDRESS	Declaration/Consignment/ConsignmentItem/Consignor/Address	Class representing the physical address of the consignor	
⊢ City name	Declaration/Consignment/ConsignmentItem/Consignor/Address/CityName	City name of the physical address of the consignor	The value should be the city name of the physical address of the consignor
⊢ Country, coded	Declaration/Consignment/ConsignmentItem/Consignor/Address/CountryCode	Code of the country of the physical address of the consignor	The value should be the code of the country of the physical address of the consignor from the list (Country name code (ISO 3166-1-alpha-2))
⊢ Street and number/P.O. Box	Declaration/Consignment/ConsignmentItem/Consignor/Address/Line	Street name of the physical address of the consignor	The value should be the street name and number (or equivalent) of the physical address of the consignor
⊢ Postcode identification	Declaration/Consignment/ConsignmentItem/Consignor/Address/PostcodeID	Postal/Zip code of the physical address of the consignor	The value should be the postal/ZIP code of the physical address of the consignor
⊢ DELIVERYDESTINATION	Declaration/Consignment/ConsignmentItem/DeliveryDestination	Class representing the potential party to which the goods should be delivered	
⊢ Name	Declaration/Consignment/ConsignmentItem/DeliveryDestination/Name	Name of the delivery destination	The value should be the official company name, or the first and last name of the person in case of physical person, to allow for quick identification.
⊢ ADDRESS	Declaration/Consignment/ConsignmentItem/DeliveryDestination/Address	Class representing the physical address of the delivery destination	
⊢ City name	Declaration/Consignment/ConsignmentItem/DeliveryDestination/Address/CityName	City name of the physical address of the delivery destination	The value should be the city name of the physical address of the delivery destination
⊢ Country, coded	Declaration/Consignment/ConsignmentItem/DeliveryDestination/Address/CountryCode	Code of the country of the physical address of the delivery destination	The value should be the code of the country of the physical address of the delivery destination from the list (Country name code (ISO 3166-1-alpha-2))
⊢ Street and number/P.O. Box	Declaration/Consignment/ConsignmentItem/DeliveryDestination/Address/Line	Street name of the physical address of the delivery destination	The value should be the street name and number (or equivalent) of the physical address of the delivery destination
⊢ Postcode identification	Declaration/Consignment/ConsignmentItem/DeliveryDestination/Address/PostcodeID	Postal/Zip code of the physical address of the delivery destination	The value should be the postal/ZIP code of the physical address of the delivery destination
⊢ GOODSMEASURE	Declaration/Consignment/ConsignmentItem/GoodsMeasure	Class representing the details on the measures of the goods	



eTIR field name	Mapping to the XML element (XPath)	Description	Usage
⊣ Gross weight	Declaration/Consignment/ConsignmentItem/GoodsMeasure/GrossMassMeasure	Total gross weight of the goods	The value should be the weight (mass) of goods including packaging but excluding the transport equipment. The unit should be defined in the Measure Unit. Code attribute and should match one of the values listed in the Measurement unit code (UNECE Recommendation 20)
⊣ PACKAGING	Declaration/Consignment/ConsignmentItem/Packaging	Class representing the list of details on the packaging of the goods	
Sequence number	Declaration/Consignment/ConsignmentItem/Packaging/SequenceNumeric	Index of the packaging in the list	The value should be the 1-based index of the packaging in the list, allowing for quick physical identification upon inspection
Marks and numbers	Declaration/Consignment/ConsignmentItem/Packaging/MarksNumbersID	Packaging marks and numbers	The value should be a text describing the marks and numbers on a transport unit or package.
Number of packages	Declaration/Consignment/ConsignmentItem/Packaging/QuantityQuantity	Number of packages	The value should be the number of individual items packaged in such a way that they cannot be divided without first undoing the packing
Type, coded	Declaration/Consignment/ConsignmentItem/Packaging/TypeCode	Code of the packaging type	The value should be the code of the type of packaging from the list Package type description code (UNECE Recommendation 21 Annex VI)
⊣ TRANSPORTEQUIPMENT	Declaration/Consignment/ConsignmentItem/TransportEquipment	Class representing the transport equipment used for the consignment item	
Identifier	Declaration/Consignment/ConsignmentItem/TransportEquipment/ID	Identifier of the transport equipment	The value should be marks (letters and/or numbers) which identify the transport equipment
⊣ UCR	Declaration/Consignment/ConsignmentItem/UCR	Class representing the Unique Trader Reference	
Identifier	Declaration/Consignment/ConsignmentItem/UCR/ID	Unique identifier of the goods	The value should be the unique identifier assigned to goods being subject to cross border transactions
⊣ LOADINGLOCATION	Declaration/Consignment/LoadingLocation	Class representing the place of loading of the goods	
Name	Declaration/Consignment/LoadingLocation/Name	Name of the loading location	The value should be the name of a seaport, airport, freight terminal, rail station or other place at which goods are loaded onto the means of transport being used for their carriage
⊣ NOTIFYPARTY	Declaration/Consignment/NotifyParty	Class representing a potential party to be notified	

eTIR field name	Mapping to the XML element (XPath)	Description	Usage
⊢ Name	Declaration/Consignment/NotifyParty/Name	Name of the party to be notified	The value should be the name (first and last name or company) of the party to be notified
⊢ Identifier	Declaration/Consignment/NotifyParty/ID	Unique identifier of the party to be notified	The value should be the unique identifier of the party to be notified
⊢ ADDRESS	Declaration/Consignment/NotifyParty/Address	Class representing the physical address of the party to be notified	
⊢ City name	Declaration/Consignment/NotifyParty/Address/CityName	City name of the physical address of the party to be notified	The value should be the city name of the physical address of the party to be notified
⊢ Country, coded	Declaration/Consignment/NotifyParty/Address/CountryCode	Code of the country of the physical address of the party to be notified	The value should be the code of the country of the physical address of the party to be notified from the list Country name code (ISO 3166-1-alpha-2)
⊢ Street and number/P.O. Box	Declaration/Consignment/NotifyParty/Address/Line	Street name of the physical address of the party to be notified	The value should be the street name and number (or equivalent) of the physical address of the party to be notified
⊢ Postcode identification	Declaration/Consignment/NotifyParty/Address/PostcodeID	Postal/Zip code of the physical address of the party to be notified	The value should be the postal/ZIP code of the physical address of the party to be notified
⊢ CUSTOMSOFFICEOFDEPARTURE	Declaration/Consignment/TransitDeparture	Class representing the customs office where the goods are loaded	
⊢ Identifier	Declaration/Consignment/TransitDeparture/ID	Unique identifier of the customs office of departure	The value should be the unique identifier used of the customs of departure, where the goods are loaded. This identifier is the one registered in the International TIR Data Bank (ITDB) for the customs office
⊢ CUSTOMSOFFICEOFDESTINATION	Declaration/Consignment/TransitDestination	Class representing the customs office where the goods are unloaded	
⊢ Identifier	Declaration/Consignment/TransitDestination/ID	Unique identifier of the customs office of destination	The value should be the unique identifier used of the customs of destination, where the goods are unloaded. This identifier is the one registered in the International TIR Data Bank (ITDB) for the customs office
⊢ TRANSPORTMEANS	Declaration/Consignment/TransitTransportMeans	Class representing the list of the means of transport for the consignment	
⊢ Identifier	Declaration/Consignment/TransitTransportMeans/ID	Unique identifier of the transport means	The value should be the unique identifier of the means of transport used for the transit
⊢ Type, coded	Declaration/Consignment/TransitTransportMeans/TypeCode	Code of the means of transport	The value should be the code of the means of transport from the list Transport means description code (UNECE Recommendation 28)

eTIR field name	Mapping to the XML element (XPath)	Description	Usage
⊢ Nationality, coded	Declaration/Consignment/TransitTransportMeans/RegistrationNationalityCode	Nationality of the means of transport	The value should be the code of the country for the nationality of the means of transport from the list Country name code (ISO 3166-1-alpha-2)
⊢ Conveyance reference number	Declaration/Consignment/TransitTransportMeans/JourneyID	Unique identifier of the journey	The value should be the unique identifier of the journey of a means of transport (for example voyage number, flight number or trip number)
⊢ Sequence number	Declaration/Consignment/TransitTransportMeans/SequenceNumeric	Index of the transport means in the list	The value should be the 1-based index of the transport means in the list
⊢ ITINERARY	Declaration/Consignment/TransitTransportMeans/Itinerary	Class representing the list of countries of the itinerary of the consignment	
⊢ Sequence number	Declaration/Consignment/TransitTransportMeans/Itinerary/SequenceNumeric	Index of the country in the list	The value should be the 1-based index of the country in the list representing the itinerary of the consignment
⊢ Country, coded	Declaration/Consignment/TransitTransportMeans/Itinerary/RoutingCountryCode	Code of the country	The value should be the code of the country from the list Country name code (ISO 3166-1-alpha-2)
⊢ CUSTOMSOFFICE	Declaration/Consignment/TransitTransportMeans/Itinerary/ItineraryGovernmentOffice	Class representing the list of customs offices of the itinerary of the consignment within the country.	
⊢ Identifier	Declaration/Consignment/TransitTransportMeans/Itinerary/ItineraryGovernmentOffice/ID	Identifier of the customs office of the itinerary	The value should be the unique identifier of the customs office of the itinerary of the consignment, within the country
⊢ Sequence number	Declaration/Consignment/TransitTransportMeans/Itinerary/ItineraryGovernmentOffice/SequenceNumeric	Index of the customs office in the list	The value should be the 1-based index of the customs office in the list representing the itinerary of the consignment in the country
⊢ Role, coded	Declaration/Consignment/TransitTransportMeans/Itinerary/ItineraryGovernmentOffice/RoleCode	Code of the customs office TIR role	The value should be the code of the customs office TIR role from the list of Customs office role among the codes 1, 2, 4 or 5
⊢ TRANSPORTEQUIPMENT	Declaration/Consignment/TransportEquipment	Class representing the list of the transport equipment used for the consignment	
⊢ Sequence number	Declaration/Consignment/TransportEquipment/SequenceNumeric	Index of the transport equipment in the list	The value should be the 1-based index of the transport equipment in the list
⊢ Size and type, coded	Declaration/Consignment/TransportEquipment/CharacteristicCode	Code of the transport equipment	The value should be the code of the transport equipment (specifying its characteristics) from the list Equipment size and type description code (UN/EDIFACT 8155)
⊢ Identifier	Declaration/Consignment/TransportEquipment/ID	Identifier of the transport equipment	The value should be marks (letters and/or numbers) which identify the transport equipment

eTIR field name	Mapping to the XML element (XPath)	Description	Usage
CERTIFICATEOFAPPROVAL	Declaration/Consignment/TransportEquipment/AdditionalDocument	Class representing the details of the certificate of approval of the transport equipment	
Number	Declaration/Consignment/TransportEquipment/AdditionalDocument/ID	Unique identifier of the certificate of approval	The value should be the unique identifier of the certificate of approval
Issuing date time	Declaration/Consignment/TransportEquipment/AdditionalDocument/IssueDateTime	Issuing date and time of the document	The value should be a date to be provided following the EDIFACT 102 format CCYYMMDD. For Example: 20200820 represents 20 August 2020
Type, coded	Declaration/Consignment/TransportEquipment/AdditionalDocument/TypeCode	Code of the type of file	The value should be the code of the type of the document from the list Document name code (UN/EDIFACT 1001)
BINARYFILE	Declaration/Consignment/TransportEquipment/AdditionalDocument/BinaryFile	Class representing the content of the document	
Identifier	Declaration/Consignment/TransportEquipment/AdditionalDocument/BinaryFile/ID	Unique identifier of the file representing the document	The value should be an ID identifying the file and it should be unique among all other binary files of the declaration
Title	Declaration/Consignment/TransportEquipment/AdditionalDocument/BinaryFile/Title	Title of the document	The value should be the title of the document
Author name	Declaration/Consignment/TransportEquipment/AdditionalDocument/BinaryFile/AuthorName	Name of the author of the document	The value should be the first and last name of the author of the document
Version	Declaration/Consignment/TransportEquipment/AdditionalDocument/BinaryFile/VersionID	Version number of the document	The value should be the version of the document
File name	Declaration/Consignment/TransportEquipment/AdditionalDocument/BinaryFile/FileNameText	File name of the document	The value should be the name of the file representing the document, including the extension
URI	Declaration/Consignment/TransportEquipment/AdditionalDocument/BinaryFile/URIID	URI of the document	The value should be the Unique Resource Identifier (URI) allowing to access the document instead of relying on a binary object representation
MIME	Declaration/Consignment/TransportEquipment/AdditionalDocument/BinaryFile/MIMECode	Code of the MIME type of the file	The value should be one of the MIME types as listed by the IANA organization
Encoding	Declaration/Consignment/TransportEquipment/AdditionalDocument/BinaryFile/EncodingCode	Code of the encoding algorithm of the file	The value should be the type of encoding algorithm used to encode the file
Character set	Declaration/Consignment/TransportEquipment/AdditionalDocument/BinaryFile/CharacterSetCode	Code of the character set of the file	The value should be the character set used in case the file is a text file
Include binary object	Declaration/Consignment/TransportEquipment/AdditionalDocument/BinaryFile/IncludedBinaryObjectBinaryObject	Binary representation of the file	The value should be the content of the file represented using the characteristics mentioned in the other attributes (EncodingCode and CharacterSetCode)

eTIR field name	Mapping to the XML element (XPath)	Description	Usage
Access	Declaration/Consignment/TransportEquipment/AdditionalDocument/BinaryFile/Access	Access information of the file	The value should be the information needed to access the file, such as security and download parameters. This is only useful when the file is accessible using the URIID parameter
Description	Declaration/Consignment/TransportEquipment/AdditionalDocument/BinaryFile/Description	Description of the document	The value should be the description of the document and explain what it contains
Size	Declaration/Consignment/TransportEquipment/AdditionalDocument/BinaryFile/SizeMeasure	Size of the file	The value should be the size of the file. The unit should be defined in the Measure Unit. Code attribute and should match one of the values listed in the Measurement unit code (UNECE Recommendation 20)
Hash code	Declaration/Consignment/TransportEquipment/AdditionalDocument/BinaryFile/HashCode	Hash value of the file	The value should be the hash code string that resulted from hashing the attached file to be used for file reception validation
Hash code algorithm id	Declaration/Consignment/TransportEquipment/AdditionalDocument/BinaryFile/HashCodeAlgorithmIDCode	Code of the hash algorithm	The value should be the short name of the algorithm used to compute the hash value of the file
SEAL	Declaration/Consignment/TransportEquipment/Seal	Class representing the list of seals affixed to the transport equipment	/!\ In the context of the eTIR specifications v4.3, this element shall not be provided /!\
Sequence number	Declaration/Consignment/TransportEquipment/Seal/SequenceNumeric	Index of the seal in the list	/!\ In the context of the eTIR specifications v4.3, this element shall not be provided /!\
Seal number	Declaration/Consignment/TransportEquipment/Seal/ID	Unique identifier of the seal	/!\ In the context of the eTIR specifications v4.3, this element shall not be provided /!\
Seal type, coded	Declaration/Consignment/TransportEquipment/Seal/TypeCode	Code of the type of seal	/!\ In the context of the eTIR specifications v4.3, this element shall not be provided /!\
GUARANTEE	Declaration/DeclarationGuarantee	Class representing the guarantee of this TIR transport	
Reference	Declaration/DeclarationGuarantee/ReferenceID	Unique identifier of the guarantee	The value should be the unique identifier of the guarantee for this TIR transport
HOLDER	Declaration/Principal	Class representing the TIR Carnet holder (transporter) of this transport	
Name	Declaration/Principal/Name	Name of the TIR Carnet holder	The value should be the official company name, or the first and last name of the person in case of physical person as recorded in the International TIR Data Bank (ITDB), to allow for quick identification
Identifier	Declaration/Principal/ID	Unique identifier of the TIR Carnet holder	The value should be the unique identifier of the TIR Carnet holder as recorded in the International TIR Data Bank (ITDB)
ADDRESS	Declaration/Principal/Address	Class representing the physical address of the TIR Carnet holder	

eTIR field name	Mapping to the XML element (XPath)	Description	Usage
└ City name	Declaration/Principal/Address/CityName	City name of the physical address of the TIR Carnet holder	The value should be the city name of the physical address of the TIR Carnet holder
└ Country, coded	Declaration/Principal/Address/CountryCode	Code of the country of the physical address of the TIR Carnet holder	The value should be the code of the country of the physical address of the TIR Carnet holder from the list Country name code (ISO 3166-1-alpha-2)
└ Street and number/P.O. Box	Declaration/Principal/Address/Line	Street name of the physical address of the TIR Carnet holder	The value should be the street name and number (or equivalent) of the physical address of the TIR Carnet holder
└ Postcode identification	Declaration/Principal/Address/PostcodeID	Postal/Zip code of the physical address of the TIR Carnet holder	The value should be the postal/ZIP code of the physical address of the TIR Carnet holder
└─ GUARANTEE	ObligationGuarantee	Class representing the guarantee of this TIR transport	
└─ Reference	ObligationGuarantee/ReferenceID	Unique identifier of the guarantee	The value should be the unique identifier of the guarantee for this TIR transport
└─ TIROPERATION	ObligationGuarantee/TransitOperation	Class representing the TIR operation that is being refused to be started	
└─ Sequence number	ObligationGuarantee/TransitOperation/SequenceNumeric	Index of the TIR operation in the list	The value should be the 1-based index of the TIR operation in the list
└─ Registration number	ObligationGuarantee/TransitOperation/RegistrationID	Identifier of the TIR operation	The value should be the unique identifier under which the TIR operation is nationally registered
└─ START	ObligationGuarantee/TransitOperation/OperationStart	Class representing the details related to the start of the TIR operation	
└ End date time	ObligationGuarantee/TransitOperation/OperationStart/InspectionEndTime	Date and time when the TIR operation has been started	The value should be a date and time to be provided following the EDIFACT 208 format CCYYMMDDHHMMSSZHHMM. For Example: 20200820145600+0100 represents 20 August 2020 at 14:56 UTC+01:00
└ Time limit date time	ObligationGuarantee/TransitOperation/OperationStart/LimitDateTime	Date (with or without the time) by when the TIR operation should be completed	The value should be either a date only or a date and time. If it is a date only, it should follow the EDIFACT 102 format CCYYMMDD. For Example: 20200820 represents 20 August 2020. If it is a date and time, it should follow the EDIFACT 208 format CCYYMMDDHHMMSSZHHMM. For Example: 20200820145600+0100 represents 20 August 2020 at 14:56 UTC+01:00.
└─ ADDITIONALINFORMATION	ObligationGuarantee/TransitOperation/OperationStart/AdditionalInformation	Class representing the potential additional information regarding the start of the TIR operation	



eTIR field name	Mapping to the XML element (XPath)	Description	Usage
↳ Remarks	ObligationGuarantee/TransitOperation/OperationStart/AdditionalInformation/Content	Remarks added when starting the TIR operation	The value should be the remark text a customs officer would record when starting the TIR operation
↳ CONSIGNMENT	ObligationGuarantee/TransitOperation/OperationStart/Consignment	Class representing potential parent object grouping all transport equipments and related seals information	
↳ TRANSPORTEQUIPMENT	ObligationGuarantee/TransitOperation/OperationStart/Consignment/TransportEquipment	Class representing the list of all transport equipments used for all consignments in the TIR operation	
↳ Identifier	ObligationGuarantee/TransitOperation/OperationStart/Consignment/TransportEquipment/ID	Identifier of the transport equipment	The value should be marks (letters and/or numbers) which identify the transport equipment
↳ SEAL	ObligationGuarantee/TransitOperation/OperationStart/Consignment/TransportEquipment/Seal	Class representing the list of seals affixed to the transport equipment	
↳ Sequence number	ObligationGuarantee/TransitOperation/OperationStart/Consignment/TransportEquipment/Seal/SequenceNumeric	Index of the seal in the list	The value should be the 1-based index of the seal in the list
↳ Seal number	ObligationGuarantee/TransitOperation/OperationStart/Consignment/TransportEquipment/Seal/ID	Unique identifier of the seal	The value should be the unique identifier of the seal affixed to the transport equipment
↳ Seal type, coded	ObligationGuarantee/TransitOperation/OperationStart/Consignment/TransportEquipment/Seal/TypeCode	Code of the type of seal	The value should be the code of the type of seal from the code list Seal type (eTIR)
↳ CONTROL	ObligationGuarantee/TransitOperation/OperationStart/Control	Class representing the details of the control performed by the customs officer before starting the TIR operation	
↳ Type, coded	ObligationGuarantee/TransitOperation/OperationStart/Control/TypeCode	Code of the type of control	The value should be the code of the type of control from the list Control type code (eTIR)
↳ CONTROLRESULT	ObligationGuarantee/TransitOperation/OperationStart/Control/ControlResult	Class representing the details of the outcome of the control performed by the customs officer	
↳ Result, coded	ObligationGuarantee/TransitOperation/OperationStart/Control/ControlResult/ID	Code of the result of the control	The value should be the code of the result of the control from the list Control result code (eTIR)
↳ NATIONALITINERARY	ObligationGuarantee/TransitOperation/OperationStart/Itinerary	Class representing the potential national itinerary that has to be followed by the TIR transport, mentioning one or more customs offices to be visited	
↳ NATIONALITINERARYCUSTOMSOFFICE	ObligationGuarantee/TransitOperation/OperationStart/Itinerary/ItineraryGovernmentOffice	Class representing the details identifying a customs office that has to be visited by the TIR transport during its itinerary	

eTIR field name	Mapping to the XML element (XPath)	Description	Usage
↳ Identifier	ObligationGuarantee/TransitOperation/OperationStart/Itinerary/ItineraryGovernmentOffice/ID	Unique identifier of the customs office of the itinerary	The value should be the unique identifier of the customs office of the itinerary. This identifier is the one recorded in the International TIR Data Bank (ITDB) for the customs office
↳ CUSTOMSOFFICE	ObligationGuarantee/TransitOperation/OperationStart/TransitOperationStartOffice	Class representing the details of the customs office where the TIR operation started	
↳ Identifier	ObligationGuarantee/TransitOperation/OperationStart/TransitOperationStartOffice/ID	Unique identifier of the customs office where the TIR operation is started	The value should be the unique identifier of the customs office where the TIR operation is started. This identifier is the one recorded in the International TIR Data Bank (ITDB) for the customs office
↳ TERMINATION	ObligationGuarantee/TransitOperation/OperationTermination	Class representing the details related to the termination of the TIR operation	
↳ End date time	ObligationGuarantee/TransitOperation/OperationTermination/InspectionEndTime	Date and time when the TIR operation has been terminated	The value should be a date and time to be provided following the EDIFACT 208 format CCYYMMDDHHMMSSZHMM. For Example: 20200820145600+0100 represents 20 August 2020 at 14:56 UTC+01:00
↳ Number of packages	ObligationGuarantee/TransitOperation/OperationTermination/PackageQuantityQuantity	Number of packages unloaded	The value should be the number of packages potentially unloaded during the termination of the TIR operation
↳ Termination type, coded	ObligationGuarantee/TransitOperation/OperationTermination/TypeCode	Code of the type of termination of the TIR operation	The value should be the type of termination code of the TIR operation from the list Termination type code (eTIR)
↳ ADDITIONALINFORMATION	ObligationGuarantee/TransitOperation/OperationTermination/AdditionalInformation	Class representing potential additional information regarding the termination of the TIR operation	
↳ Reservations	ObligationGuarantee/TransitOperation/OperationTermination/AdditionalInformation/Content	Reservations/remarks added when terminating the TIR operation	The value should be the reservations a customs officer would have added when terminating the TIR operation
↳ CONSIGNMENT	ObligationGuarantee/TransitOperation/OperationTermination/Consignment	Class representing potential parent object grouping details about all transport equipments and related seals information	
↳ TRANSPORTEQUIPMENT	ObligationGuarantee/TransitOperation/OperationTermination/Consignment/TransportEquipment	Class representing the list of all transport equipments used for all consignments in the TIR operation	
↳ Identifier	ObligationGuarantee/TransitOperation/OperationTermination/Consignment/TransportEquipment/ID	Identifier of the transport equipment	The value should be the marks (letters and/or numbers) which identify the transport equipment
↳ SEAL	ObligationGuarantee/TransitOperation/OperationTermination/Consignment/TransportEquipment/Seal	Class representing the list of seals affixed to the transport equipment	

eTIR field name	Mapping to the XML element (XPath)	Description	Usage
└ Sequence number	ObligationGuarantee/TransitOperation/OperationTermination/Consignment/TransportEquipment/Seal/SequenceNumeric	Index of the seal in the list	The value should be the 1-based index of the seal in the list
└ Seal number	ObligationGuarantee/TransitOperation/OperationTermination/Consignment/TransportEquipment/Seal/ID	Unique identifier of the seal	The value should be the unique identifier of the seal affixed to the transport equipment
└ Seal type, coded	ObligationGuarantee/TransitOperation/OperationTermination/Consignment/TransportEquipment/Seal/TypeCode	Code of the type of seal	The value should be the code of the type of seal from the list Seal type code (eTIR)
└─ CONTROL	ObligationGuarantee/TransitOperation/OperationTermination/Control	Class representing the details of the control performed by the customs officer while terminating the TIR operation	
└ Type, coded	ObligationGuarantee/TransitOperation/OperationTermination/Control/TypeCode	Code of the type of control	The value should be the code of the type of control from the list Control type code (eTIR)
└─ CONTROLRESULT	ObligationGuarantee/TransitOperation/OperationTermination/Control/ControlResult	Class representing the details of the outcome of the control performed by the customs officer	
└ Result, coded	ObligationGuarantee/TransitOperation/OperationTermination/Control/ControlResult/ID	Code of the result of the control	The value should be the code of the result of the control from the list Control result code (eTIR)
└─ CUSTOMSOFFICE	ObligationGuarantee/TransitOperation/OperationTermination/TransitOperationTerminationOffice	Class representing the details of the customs office where the TIR operation is terminated	
└ Identifier	ObligationGuarantee/TransitOperation/OperationTermination/TransitOperationTerminationOffice/ID	Unique identifier of the customs office where the TIR operation is terminated	The value should be the unique identifier of the customs office where the TIR operation is terminated. This identifier is the one recorded in the International TIR Data Bank (ITDB) for the customs office
└─ DISCHARGE	ObligationGuarantee/TransitOperation/OperationDischarge	Class representing the details related to the discharge of the TIR operation	
└ End date time	ObligationGuarantee/TransitOperation/OperationDischarge/InspectionEndDateTime	Date and time when the TIR operation has just been discharged	The value should be a date and time to be provided following the EDIFACT 208 format CCYYMMDDHHMMSSZHMM. For Example: 20200820145600+0100 represents 20 August 2020 at 14:56 UTC+01:00
└─ CUSTOMSOFFICE	ObligationGuarantee/TransitOperation/OperationDischarge/TransitOperationDischargeOffice	Class representing the details of the customs office where the TIR operation is discharged	
└ Identifier	ObligationGuarantee/TransitOperation/OperationDischarge/TransitOperationDischargeOffice/ID	Unique identifier of the customs office where the TIR operation is discharged	The value should be the unique identifier of the customs office where the TIR operation is discharged. This identifier is the one recorded in the International TIR Data Bank (ITDB) for the customs office
└─ REFUSALTOSTART	ObligationGuarantee/TransitOperation/RefusalToStart	Class representing the details related to the refusal to start the TIR operation	

eTIR field name	Mapping to the XML element (XPath)	Description	Usage
End date time	ObligationGuarantee/TransitOperation/RefusalToStart/InspectionEndDateTime	Date and time when the TIR operation has been refused to be started	The value should be a date and time to be provided following the EDIFACT 208 format CCYYMMDDHHMMSSZHHMM. For Example: 20200820145600+0100 represents 20 August 2020 at 14:56 UTC+01:00
ADDITIONALINFORMATION	ObligationGuarantee/TransitOperation/RefusalToStart/AdditionalInformation	Class representing additional information regarding the refusal to start the TIR operation	
Reason	ObligationGuarantee/TransitOperation/RefusalToStart/AdditionalInformation/Content	Reason for refusing to start the TIR operation	The value should be the reason(s) a customs officer would have refused to start a TIR operation
CONTROL	ObligationGuarantee/TransitOperation/RefusalToStart/Control	Class representing the details of the control performed by the customs officer before refusing to start the TIR operation	
Type, coded	ObligationGuarantee/TransitOperation/RefusalToStart/Control/TypeCode	Code of the type of control	The value should be the code of the type of control from the list Control type code (eTIR)
CONTROLRESULT	ObligationGuarantee/TransitOperation/RefusalToStart/Control/ControlResult	Class representing the details of the outcome of the control performed by the customs officer	
Result, coded	ObligationGuarantee/TransitOperation/RefusalToStart/Control/ControlResult/ID	Code of the result of the control	The value should be the code of the result of the control from the list Control result code (eTIR)
CUSTOMSOFFICE	ObligationGuarantee/TransitOperation/RefusalToStart/TransitOperationStartOffice	Class representing the details of the customs office where the TIR operation is refused to be started	
Identifier	ObligationGuarantee/TransitOperation/RefusalToStart/TransitOperationStartOffice/ID	Unique identifier of the customs office where the TIR operation is refused to be started	The value should be the unique identifier of the customs office where the TIR operation is refused to be started. This identifier is the one recorded in the International TIR Data Bank (ITDB) for the customs office



When reading the values of the second columns for both tables, note that the "InterGov/" XML base element has been removed to improve the readability, as it is repeated on every line.

### 6.3.4. Referred code lists

The following code lists are referred to in the field lists and should be considered when receiving the message:

- [CL01](#) - Equipment size and type description code (UN/EDIFACT 8155)
- [CL02](#) - Party role code (UN/EDIFACT 3035)
- [CL04](#) - Country name code (ISO 3166-1-alpha-2)
- [CL05](#) - Transport means description code (UNECE Recommendation 28)
- [CL06](#) - Document name code (UN/EDIFACT 1001)
- [CL07](#) - Package type description code (UNECE Recommendation 21 Annex VI)
- [CL08](#) - Seal type code (eTIR)
- [CL16](#) - Message function code (UN/EDIFACT 1225)
- [CL17](#) - Amendment type code (eTIR)
- [CL24](#) - Control result code (eTIR)
- [CL25](#) - Control type code (eTIR)
- [CL26](#) - Message types (eTIR)
- [CL27](#) - Termination type code (eTIR)
- [CL31](#) - Customs office role



All code lists are described in the [eTIR code lists document](#).

### 6.3.5. Conditions and rules

The following condition(s) of the [eTIR conditions list](#) are referred to in the field lists and should be considered in the message:

- **C001:** IF EMPTY (PARTY.code)  
THEN NOT EMPTY (PARTY.name , PARTY.ADDRESS)
- **C002:** IF (PACKAGING.Type, coded) = 'VQ', 'VG', 'VL', 'VY', 'VR' OR 'VO'  
THEN OPTIONAL (PACKAGING.Marks and numbers)  
AND EMPTY (PACKAGING.Number of packages)  
ELSE IF (PACKAGING.Type, coded) = 'NE', 'NF' OR 'NG'  
THEN OPTIONAL (PACKAGING.Marks and numbers)  
AND NOT EMPTY (PACKAGING.Number of packages)  
ELSE NOT EMPTY (PACKAGING.Marks and numbers)  
AND NOT EMPTY (PACKAGING.Number of packages)
- **C003:** IF (CONSIGNMENT.Heavy or bulky goods indicator) = FALSE  
THEN NOT EMPTY (TRANSPORTEQUIPMENT)  
ELSE EMPTY (TRANSPORTEQUIPMENT)
- **C004:** IF EMPTY (GOODS.CLASSIFICATION) OR (GOODS.CLASSIFICATION.Type) <> 'HS'  
THEN NOT EMPTY (GOODS.Description)
- **C005:** IF (CONSIGNMENT.Heavy or bulky goods indicator) = FALSE AND (CONSIGNMENT.Container transport indicator) = '69 - FALSE'  
THEN NOT EMPTY (TRANSPORTEQUIPMENT.CERTIFICATEOFAPPROVAL)  
ELSE EMPTY (TRANSPORTEQUIPMENT.CERTIFICATEOFAPPROVAL)
- **C010:** IF (MESSAGE.Message function, coded) = '69' OR '96'

```

THEN NOT EMPTY (DECLARATIONDATA) AND EMPTY (GUARANTEE.TIROPERATION)
ELSE IF (MESSAGE.Message function, coded) = '71' OR '72'
THEN EMPTY (DECLARATIONDATA) AND NOT EMPTY (GUARANTEE.TIROPERATION)

```

The following rules of the [eTIR rules list](#) are referred to in the field lists and should be considered in the message:

- **R001:** *Each country of routing shall have a unique sequence number. They shall be numbered from 1 to the number of countries through which the means of transport travels and represent the order in which countries are travelled, from departure to destination.*
- **R002:** *Each transport means shall have a unique sequence number. They shall be numbered from 1 to the number of transport means involved in the transport and represent the order in which transport means are used, from departure to destination.*
- **R003:** *Re-use a sequence number to indicate that a seal has been replaced.*
- **R004:** *Use new sequence number only to mention additional seals.*
- **R005:** *Indicate that a seal has been removed and not replaced with an "X" in the "seals number" field of the transport equipment sequence corresponding to the removed seal.*
- **R006:** *Required in case the seals have been changed, added or removed.*
- **R007:** *Even in case of multiple consignments in the declaration, only the first consignment is listed, and all transport equipment used must be listed only in that consignment.*
- **R008:** *The first occurrence of GOODS.CLASSIFICATION must be of type "HS".*

### 6.3.6. How the national customs system should process the information received in the notification

Upon reception, the **I15 - Notify customs** message should be validated and any error found should be returned in the **I16 - Notification confirmation** message.

Depending on the event triggering the communication of the notification, the eTIR international system will fill specific fields of the **I15 - Notify customs** message. Since the national customs system does not about know the reason for sending this notification, it should process the entire message and record in its database all the information contained in the message.

In the events described in [Declaration](#), the eTIR international system will send the information about the declaration data in the "DECLARATIONDATA" class of the message. In this scenario, the national customs system records all information related to the TIR transport in its database (if it's the first time it receives this declaration) and will return, in the **I16 - Notification confirmation** message, the national reference associated to the TIR transport.

In the events described in [Seals](#), the eTIR international system will send the information related to the seals either in the "GUARANTEE/TIROPERATION/START" class or in the "GUARANTEE/TIROPERATION/TERMINATION" class. In this scenario, the national customs system records the information about the new seals in its database.

### 6.3.7. Example

The example below shows the XML data to be sent via POST method to the national customs system endpoint URL to notify each customs authorities of the countries along the itinerary of information related to the beginning of the TIR transport related to the seals information during a Start TIR operation at customs office **GE0715** for the TIR transport related to the guarantee **XF95001234**. This request message (Message function: **96 - Amended declaration data**) of the type **I15**, describes a TIR transport declaration data that was issued on **09/04/2021** at **09:45 UTC+4** by the customs office **GE0715**, regarding a consignment of 15 tons of "COVID-19 Diagnostic Test instruments and

apparatus" sent by truck from Georgia to Iran (through Turkey) by the TIR Carnet holder **GEO/054/9890**. There is a CMR as an attached document and also the certificate of approval for the transport equipment.

### I15 - Notify customs request message

```
<?xml version="1.0" encoding="UTF-8"?>
<soap:Envelope xmlns:soap="http://www.w3.org/2003/05/soap-envelope">
  <soap:Header xmlns:wsa="http://www.w3.org/2005/08/addressing">
    (...)
    <wsa:Action>http://etir.org/v4.3/toCustoms/notifyCustoms</wsa:Action>
    <wsa:MessageID>uuid:7538f686-a769-4120-a922-1fa671f43d1e</wsa:MessageID>
    (...)
  </soap:Header>
  <soap:Body xmlns:wsu="http://docs.oasis-open.org/wss/2004/01/oasis-200401-wss-wssecurity-utility-1.0.xsd"
    wsu:Id="id-bf84dd2d-3344-4867-81c1-919188eb3381">
    <ns3:notifyCustoms xmlns:ns3="http://etir.org/v4.3/toCustoms" xmlns:md=
      "http://etir.org/v4.3/DocumentMetaData"
        xmlns:ns4="http://etir.org/v4.3/I15" xmlns:ns2="http://etir.org/v4.3/DataSets">
      <ns4:DocumentMetadata>
        <md:ResponsibleAgencyCode>AJ</md:ResponsibleAgencyCode>
        <md:AgencyAssignedCustomizationCode>1</md:AgencyAssignedCustomizationCode>
        <md:AgencyAssignedCustomizationVersionCode>1</md:AgencyAssignedCustomizationVersionCode>
        <md:CommunicationMetadata>
          <md:PreparationDateTime formatCode="208">20201122113346+0200</md:PreparationDateTime>
          <md:Recipient>
            <md:ID>recipientID</md:ID>
          </md:Recipient>
          <md:Sender>
            <md:ID>eTIR international system</md:ID>
          </md:Sender>
        </md:CommunicationMetadata>
        <ns4:InterGov>
          <ns4:Function>96</ns4:Function>
          <ns4:ID>55d70f8a-4cbc-4132-88b4-706ce7ca7cf3</ns4:ID>
          <ns4:TypeCode>I15</ns4:TypeCode>
          <ns4:Declaration>
            <ns4:IssueDateTime formatCode="208">20210409094536+04 00</ns4:IssueDateTime>
            <!--Optional:-->
            <ns4:AdditionalInformation/>
            <!--Optional:-->
            <ns4:Agent>
              <ns2:ID>AG2457-GE0154</ns2:ID>
              <ns2:RoleCode>AG</ns2:RoleCode>
            </ns4:Agent>
            <!--Optional:-->
            <ns4:Carrier>
              <ns2:ID>GEO/054/9890</ns2:ID>
            </ns4:Carrier>
            <!--Zero or more repetitions:-->
            <ns4:Consignment>
              <ns2:ContainerCode>69</ns2:ContainerCode>
              <ns2:SequenceNumeric>1</ns2:SequenceNumeric>
              <ns2:HeavyOrBulkyGoodsIndicator>0</ns2:HeavyOrBulkyGoodsIndicator>
              <!--Zero or more repetitions:-->
              <ns2:AdditionalDocument>
                <ns2:ID>attached_document_001</ns2:ID>
                <ns2:IssueDateTime formatCode="102">20210403</ns2:IssueDateTime>
                <ns2:TypeCode>730</ns2:TypeCode>
                <ns2:BinaryFile>
                  <ns2:ID>1</ns2:ID>
                  <ns2:Title>CMR</ns2:Title>
                  <ns2:IncludedBinaryObjectBinaryObject>dGhpcyBpcyBhIH (...) Rlc3QgZmlsZQ==
                </ns2:IncludedBinaryObjectBinaryObject>
                  <ns2:AuthorName>Gérard Menvuga</ns2:AuthorName>
                  <ns2:VersionID>1</ns2:VersionID>
                </ns2:BinaryFile>
              </ns2:AdditionalDocument>
            </ns4:Consignment>
          </ns4:Declaration>
        </ns4:InterGov>
      </ns4:DocumentMetadata>
    </ns3:notifyCustoms>
  </soap:Body>
</soap:Envelope>
```



```

<ns2:FileNameText>cmr12482.pdf</ns2:FileNameText>
<ns2:MIMECode>application/pdf</ns2:MIMECode>
<ns2:EncodingCode>UTF-8</ns2:EncodingCode>
<ns2:CharacterSetCode>UTF-8</ns2:CharacterSetCode>
<ns2:Description>The CMR linked to the TIR transport</ns2:Description>
<ns2:SizeMeasure unitCode="2P">754</ns2:SizeMeasure>
<ns2:TypeCode>pdf</ns2:TypeCode>
<ns2:HashCode>54b0c58c7ce9f2a8b551351102ee0938</ns2:HashCode>
<ns2:HashCodeAlgorithmIDCode>MD5</ns2:HashCodeAlgorithmIDCode>
</ns2:BinaryFile>
</ns2:AdditionalDocument>
<!--1 or more repetitions:-->
<ns2:ConsignmentItem>
  <ns2:SequenceNumeric>1</ns2:SequenceNumeric>
  <!--Zero or more repetitions:-->
  <ns2:AdditionalInformation>
    <ns2:Content>Instruments used in clinical laboratories for In Vitro Diagnosis
    </ns2:Content>
  </ns2:AdditionalInformation>
  <ns2:Commodity>
    <ns2:CargoDescription>COVID-19 Diagnostic Test instruments and apparatus
    </ns2:CargoDescription>
    <!--Zero or more repetitions:-->
    <ns2:Classification>
      <ns2:ID>9027.80</ns2:ID>
      <ns2:IdentificationTypeCode>HS</ns2:IdentificationTypeCode>
    </ns2:Classification>
  </ns2:Commodity>
  <!--Optional:-->
  <ns2:Consignee>
    <ns2:ID>CE368324456</ns2:ID>
  </ns2:Consignee>
  <!--Optional:-->
  <ns2:Consignor>
    <ns2:ID>C0654832668</ns2:ID>
  </ns2:Consignor>
  <!--Optional:-->
  <ns2:DeliveryDestination>
    <ns2:Name>Tehran Fictitious Hospital</ns2:Name>
    <ns2:Address>
      <ns2:CityName>Tehran</ns2:CityName>
      <ns2:CountryCode>IR</ns2:CountryCode>
      <ns2:Line>Shoosh St</ns2:Line>
      <ns2:PostcodeID>1230</ns2:PostcodeID>
    </ns2:Address>
  </ns2:DeliveryDestination>
  <ns2:GoodsMeasure>
    <ns2:GrossMassMeasure>15000</ns2:GrossMassMeasure>
  </ns2:GoodsMeasure>
  <ns2:Packaging>
    <ns2:TypeCode>V0</ns2:TypeCode>
    </ns2:Packaging>
    <!--Optional:-->
    <ns2:TransportEquipment>
      <ns2:ID>TE1</ns2:ID>
    </ns2:TransportEquipment>
    <!--Optional:-->
    <ns2:UCR>
      <!--Optional:-->
      <ns2:ID>UCR</ns2:ID>
    </ns2:UCR>
  </ns2:ConsignmentItem>
  <!--Optional:-->
  <ns2>LoadingLocation>
    <!--Optional:-->
    <ns2:Name>Fictitious Factory</ns2:Name>
  </ns2>LoadingLocation>

```



```

<!--Optional:-->
<ns2:NotifyParty>
</ns2:NotifyParty>
<ns2:TransitDeparture>
  <ns2:ID>GE0715</ns2:ID>
</ns2:TransitDeparture>
<ns2:TransitDestination>
  <ns2:ID>IR10210</ns2:ID>
</ns2:TransitDestination>
<!--1 or more repetitions:-->
<ns2:TransitTransportMeans>
  <ns2:ID>CM-875-KZ</ns2:ID>
  <ns2:TypeCode>33</ns2:TypeCode>
  <ns2:RegistrationNationalityCode>GE</ns2:RegistrationNationalityCode>
  <ns2:JourneyID>J-12745124</ns2:JourneyID>
  <ns2:Itinerary>
    <ns2:SequenceNumeric>1</ns2:SequenceNumeric>
    <ns2:RoutingCountryCode>GE</ns2:RoutingCountryCode>
    <!--1 or more repetitions:-->
    <ns2:CustomsOffice>
      <ns2:SequenceNumeric>1</ns2:SequenceNumeric>
      <ns2:ID>GE000040</ns2:ID>
      <ns2:RoleCode>001</ns2:RoleCode>
    </ns2:CustomsOffice>
    <ns2:CustomsOffice>
      <ns2:SequenceNumeric>2</ns2:SequenceNumeric>
      <ns2:ID>GE000610</ns2:ID>
      <ns2:RoleCode>005</ns2:RoleCode>
    </ns2:CustomsOffice>
  </ns2:Itinerary>
  <ns2:Itinerary>
    <ns2:SequenceNumeric>2</ns2:SequenceNumeric>
    <ns2:RoutingCountryCode>TR</ns2:RoutingCountryCode>
    <ns2:CustomsOffice>
      <ns2:SequenceNumeric>1</ns2:SequenceNumeric>
      <ns2:ID>TR001141</ns2:ID>
      <ns2:RoleCode>004</ns2:RoleCode>
    </ns2:CustomsOffice>
    <ns2:CustomsOffice>
      <ns2:SequenceNumeric>2</ns2:SequenceNumeric>
      <ns2:ID>TR001251</ns2:ID>
      <ns2:RoleCode>005</ns2:RoleCode>
    </ns2:CustomsOffice>
  </ns2:Itinerary>
  <ns2:Itinerary>
    <ns2:SequenceNumeric>3</ns2:SequenceNumeric>
    <ns2:RoutingCountryCode>IR</ns2:RoutingCountryCode>
    <ns2:CustomsOffice>
      <ns2:SequenceNumeric>1</ns2:SequenceNumeric>
      <ns2:ID>IR000690</ns2:ID>
      <ns2:RoleCode>004</ns2:RoleCode>
    </ns2:CustomsOffice>
    <ns2:CustomsOffice>
      <ns2:SequenceNumeric>2</ns2:SequenceNumeric>
      <ns2:ID>IR000100</ns2:ID>
      <ns2:RoleCode>003</ns2:RoleCode>
    </ns2:CustomsOffice>
  </ns2:Itinerary>
</ns2:TransitTransportMeans>
<!--Zero or more repetitions:-->
<ns2:TransportEquipment>
  <ns2:SequenceNumeric>1</ns2:SequenceNumeric>
  <ns2:CharacteristicCode>CC1</ns2:CharacteristicCode>
  <ns2:ID>TE1</ns2:ID>
  <ns2:AdditionalDocument>
    <ns2:ID>CoA-4873218</ns2:ID>
    <ns2:IssueDateTime formatCode="208">20201122113346+0400</ns2:IssueDateTime>

```

truck

```

<ns2:TypeCode>CoA</ns2:TypeCode>
<ns2:BinaryFile>
  <ns2:ID>1</ns2:ID>
  <ns2:Title>Certificate of approval</ns2:Title>
  <ns2:AuthorName>Georgia Revenue Service</ns2:AuthorName>
  <ns2:VersionID>1</ns2:VersionID>
  <ns2:URIID>https://my.server/fileFolder/CoA.pdf</ns2:URIID>
  <ns2:Access>Password:mysecurepassword</ns2:Access>
  <ns2:Description>The scan copy of the certificate of approval of the TIR

  </ns2:Description>
  <ns2:SizeMeasure unitCode="4L">2.457</ns2:SizeMeasure>
  <ns2:TypeCode>pdf</ns2:TypeCode>
  <ns2:HashCode>4b8c7b76204678a76d6a8ab83f5563d0</ns2:HashCode>
  <ns2:HashCodeAlgorithmIDCode>MD5</ns2:HashCodeAlgorithmIDCode>
</ns2:BinaryFile>
</ns2:AdditionalDocument>
<!--Zero or more repetitions:-->
<ns2:Seal>
</ns2:Seal>
</ns2:TransportEquipment>
</ns4:Consignment>
<!--Zero or more repetitions:-->
<ns4:DeclarationGuarantee>
  <ns4:ExpirationDateTime formatCode="102">20211122</ns4:ExpirationDateTime>
  <ns4:ReferenceID>XF95001234</ns4:ReferenceID>
</ns4:DeclarationGuarantee>
<!--Optional:-->
<!--principal mandatory for process even if not in wsdl-->
<ns4:Principal>
  <ns4:ID>GE0/054/9890</ns4:ID>
</ns4:Principal>
</ns4:Declaration>
<ns4:ObligationGuarantee>
  <ns4:ReferenceID>XF95001234</ns4:ReferenceID>
</ns4:ObligationGuarantee>
</ns4:InterGov>
</ns4:DocumentMetadata>
</ns3:notifyCustoms>
</soap:Body>
</soap:Envelope>

```



Some field original contents have been shortened (...) in this document for the sake of readability, in particular the content of the attached document and the whole **header/security** content that is described in the [eTIR web services introduction document](#).



More examples of the I15 - Notify customs request message and of the I16 - Notification confirmation response message are available in the [More examples](#) annex of this document.

## 6.4. "I16 - Notification confirmation" response message

### 6.4.1. Description

The national customs system returns the **I16 - Notification confirmation** response message to the eTIR international system to confirm the reception of the notification and to provide the national reference of the TIR transport (when the notification is received in case of new or updated declaration data).

The XSD file related to the **I16 - Notification confirmation** message is available at the following URL: [https://wiki.unece.org/download/attachments/106299941/WCO\\_eTIR\\_I16\\_1.xsd](https://wiki.unece.org/download/attachments/106299941/WCO_eTIR_I16_1.xsd).

### 6.4.2. Field details



Kindly note that the metadata fields have been removed from this table to improve the readability, as it is part of every eTIR message. You can find the details about these metadata fields in section 9.4 of the [eTIR introduction document](#).

eTIR field name	Mapping to the XML element (XPath)	Status	Cardinality	Format	Code lists	Conditions	Rules
MESSAGE							
└ Message function, coded	Function	R	1..1	n..2	<a href="#">CL16</a>		
└ Original Message Identifier	FunctionalReferenceID	R	1..1	an..70			
└ Message identifier	ID	R	1..1	an..70			
└ Type, coded	TypeCode	R	1..1	an..3	<a href="#">CL26</a>		
└─ DECLARATIONDATA	Declaration	O	0..1				R011
└ └─ NATIONALREFERENCE	Declaration/NationalReference	R	1..1				
└ └ └ Reference	Declaration/NationalReference/ID	R	1..1	an..35			
└ └ └ Country, coded	Declaration/NationalReference/IssuingCountryCode	R	1..1	a2	<a href="#">CL04</a>		
└─ ERROR	Error	D	0..*			C006	
└ └ Error, coded	Error/ValidationCode	R	1..1	an..8	<a href="#">CL99</a>		
└ └─ POINTER	Error/Pointer	R	1..*				
└ └ └ Sequence number	Error/Pointer/SequenceNumeric	R	1..1	n..5			
└ └ └ Location	Error/Pointer/Location	R	1..1	an..512			

### 6.4.3. Field descriptions & usages



Kindly note that the metadata fields have been removed from this table to improve the readability, as it is part of every eTIR message. You can find the details about these metadata fields in section 9.4 of the [eTIR introduction document](#).

eTIR field name	Mapping to the XML element (XPath)	Description	Usage
MESSAGE			
└ Message function, coded	Function	Code describing the function of the message	The value should be '6' (Confirmation) if the request was processed correctly. If at least one error is described in this message, the value should be '27' (Not accepted)
└ Original Message Identifier	FunctionalReferenceID	Unique identifier of the request message associated with this response	The value should be the one mentioned in the message identifier field of the request message (I15)
└ Message identifier	ID	Unique identifier of the message	The value should be a Globally Unique Identifier (GUID) as detailed in the dedicated section of the introduction document
└ Type, coded	TypeCode	Code of the message type	The value should be set to 'I16'
└─ DECLARATIONDATA	Declaration	Class representing the declaration data as accepted by customs	
└─ NATIONALREFERENCE	Declaration/NationalReference	Class representing the list of national references under which the declaration data has been saved in the countries along the itinerary of the transport	
└ Reference	Declaration/NationalReference/ID	Identifier of the national reference of the declaration	The value should be the identifier of the national reference under which the declaration has been saved in the country which has received the 'I15 - Notify customs' notification message
└ Country, coded	Declaration/NationalReference/IssuingCountryCode	Code of the country along the itinerary	The value should be the code of the country which has received the notification 'I15' from the list Country name code (ISO 3166-1-alpha-2)
└─ ERROR	Error	Class representing the list of errors, if any	
└   Error, coded	Error/ValidationCode	Code of the error type	The value should be the code of the error from the list Error code (eTIR)
└─ POINTER	Error/Pointer	Class representing the pointer to the erroneous field, if any	
└   Sequence number	Error/Pointer/SequenceNumeric	Index of the error in the list	The value should be the 1-based index of the error in the list
└   Location	Error/Pointer/Location	Location of the erroneous field	The value should be the location of the erroneous field following the XPath syntax. Additional details regarding the location of the fields per error code are available on the page dedicated to errors



When reading the values of the second columns for both tables, note that the "InterGov/" XML base element has been removed to improve

the readability, as it is repeated on every line.

#### 6.4.4. Referred code lists

The following code lists are referred to in the field lists and should be considered when sending the message:

- [CL04](#) - Country name code (ISO 3166-1-alpha-2)
- [CL16](#) - Message function code (UN/EDIFACT 1225)
- [CL26](#) - Message types (eTIR)
- [CL99](#) - Error code (eTIR)



All code lists are described in the [eTIR code lists document](#).

#### 6.4.5. Conditions and rules

The following condition(s) of the [eTIR conditions list](#) are referred to in the field lists and should be considered in the message:

- **C006:** IF (MESSAGE.Message function, coded) = '6', '11', '44' OR '45'  
THEN EMPTY (ERROR)  
ELSE IF (MESSAGE.Message function, coded) = '10' OR '27'  
THEN NOT EMPTY (ERROR)

The following rules of the [eTIR rules list](#) are referred to in the field lists and should be considered in the message:

- **R011:** *If the Message confirms the reception of declaration data (original or amended) then the "National Reference" information must be provided.*

#### 6.4.6. How the national customs system should prepare and send the notification confirmation

If one or more errors were detected during the validation of the **I15 - Notify customs** message, they should be listed in the **I16 - Notification confirmation** message.

If no error was found, the national customs system will generate the **I16 - Notification confirmation** message and send it to the eTIR international system to acknowledge receipt of the notification. In case the **I15 - Notify customs** message was sent to forward information related to the declaration data, the national customs system should return the national reference information used to record the TIR transport.

#### 6.4.7. Applicable error codes



It is important that in the context of **I15 - Notify customs** / **I16 - Notification confirmation** messages, all possible errors are to be detected and returned by the national customs system if found. The [eTIR web services introduction document](#) contains a dedicated section describing how and where to add those error codes in the response messages. Find below the list of error codes that may be returned as part of the **I16 - Notification confirmation** response message:

##### [100 - Invalid message](#)

Kindly check the message itself and its format as it is not recognized by the eTIR international system. Kindly contact the eTIR service desk to send the content of the message communicated, the timestamps and the steps to reproduce this issue in order to address it.

### 101 - Missing field

Kindly check the message parameters, in particular the parameters marked as mandatory in the message description section of this document, and make sure that all mandatory parameters are part of the message.

### 102 - Invalid domain for the value

Kindly check the coded parameter, its values and corresponding code lists. Make sure that each coded parameter is using one of the values of the corresponding code list.

### 105 - Field value length exceeded

Kindly check the parameter value lengths. Make sure that each parameter length does not exceed the max length as defined in the documentation in the Format column.

### 106 - Invalid pattern

Kindly check the pattern of the parameter value as it does not match the requirements set for this attribute in XML Schema Definition of the message.

### 107 - Invalid field

Kindly check the element specified as it may not follow the order defined in the XML Schema Definition of the message.

### 156 - Condition C006 failure

Kindly check the parameters constrained by the condition [C006] and make sure their values respect:

```
IF (MESSAGE.Message function, coded) = '6', '11', '44' OR '45'  
THEN EMPTY (ERROR)  
ELSE IF (MESSAGE.Message function, coded) = '10' OR '27'  
THEN NOT EMPTY (ERROR).
```

### 160 - Condition C010 failure

Kindly check the parameters constrained by the condition [C010] and make sure their values respect:

```
IF (MESSAGE.Message function, coded) = '69' OR '96'  
THEN NOT EMPTY (DECLARATIONDATA) AND EMPTY (GUARANTEE.TIROPERATION)  
ELSE IF (MESSAGE.Message function, coded) = '71' OR '72'  
THEN EMPTY (DECLARATIONDATA) AND NOT EMPTY (GUARANTEE.TIROPERATION).
```

### 181 - Rule R001 failure

Kindly check the parameters constrained by rule [R001] and make sure their values respect the conditions set by the rule.

### 182 - Rule R002 failure

Kindly check the parameters constrained by rule [R002] and make sure their values respect the conditions set by the rule.

### 188 - Rule R008 failure

Kindly check the parameters constrained by rule [R008] and make sure their values respect the conditions set by the rule.

### 200 - Invalid State

Kindly check the state of the referred object (transport, guarantee, ...) and make sure it is consistent with the eTIR international system requested web service called.

### 214 - Operation ID already registered

Kindly check the message ID and that it is not conflicting with another operation ID.

### 300 - Invalid Operation

Kindly check the message content as it triggered a technical error in the eTIR international system but this one could not identify the source of the issue.

### 301 - guarantee not found

Kindly check the value of the guarantee reference ID in the message and make sure it matches the value received in previous messages.

### 302 - guarantee chain not found

Kindly check the value of the guarantee chain ID in the message and make sure it matches the value received in previous messages.

### 303 - guarantee type not found

Kindly check the value of the guarantee type in the message and make sure it belongs to the [Guarantee type code \(eTIR\)](#) code list, and that it matches the value received in previous messages.



The full list of error codes can be found on the [dedicated error code list web page](#).

## 6.4.8. Example

The example below shows the XML data of the **I16 - Notification confirmation** message sent to the eTIR international system [endpoint URL](#), by the national customs system, in response to the POST of the **I15 - Notify customs** message received from the eTIR international system. This response message (Function code **6 - Confirmation**) of the type **I16**, containing no error codes, describes a confirmation of the reception of the notification by the customs authorities from Iran (**IR**) and returns the national reference of the TIR transport issued by their national customs system: **TIR-XF95001234**. Therefore, it should be considered that the notification has been duly received and recorded in the national customs system.



It is important to understand that the absence of error in the **I16 - Notification confirmation** response message is the key indicator to reflect that the notification has been received and acknowledged.

### I16 - Notification confirmation response message

```
<?xml version="1.0" encoding="UTF-8"?>
<soap:Envelope xmlns:soap="http://www.w3.org/2003/05/soap-envelope">
  <soap:Header xmlns:wsa="http://www.w3.org/2005/08/addressing">
    (...)
    <wsa:Action>http://etir.org/v4.3/toCustoms/notificationConfirmation</wsa:Action>
    <wsa:MessageID>uuid:256b0d3c-d220-47ed-a3bd-9b4d29289572</wsa:MessageID>
    (...)
  </soap:Header>
  <soap:Body xmlns:wsu="http://docs.oasis-open.org/wss/2004/01/oasis-200401-wss-wssecurity-utility-1.0.xsd"
    wsu:Id="id-157c8636-0d0b-48ac-bd58-67da0007c354">
    <ns3:notificationsConfirmation xmlns:ns3="http://etir.org/v4.3/toCustoms" xmlns:ns4=
"http://etir.org/v4.3/I16"
      xmlns:md="http://etir.org/v4.3/DocumentMetaData">
      <ns4:DocumentMetadata>
        <md:ResponsibleAgencyCode>AJ</md:ResponsibleAgencyCode>
        <md:AgencyAssignedCustomizationCode>1</md:AgencyAssignedCustomizationCode>
        <md:AgencyAssignedCustomizationVersionCode>1</md:AgencyAssignedCustomizationVersionCode>
        <md:CommunicationMetadata>
          <md:PreparationDateTime formatCode="208">20201122113346+0200</md:PreparationDateTime>
          <md:Recipient>
            <md:ID>eTIR international system</md:ID>
          </md:Recipient>
        </md:CommunicationMetadata>
      </ns4:DocumentMetadata>
    </ns3:notificationsConfirmation>
  </soap:Body>
</soap:Envelope>
```



```
</md:Recipient>
<md:Sender>
  <md:ID>recipientID</md:ID>
</md:Sender>
</md:CommunicationMetaData>
<ns4:InterGov>
  <ns4:Function>6</ns4:Function>
  <ns4:FunctionalReferenceID>55d70f8a-4cbc-4132-88b4-706ce7ca7cf3</ns4:FunctionalReferenceID>
  <ns4:ID>ec8682bc-f3b2-48b9-a4de-f03c3fa8e9d9</ns4:ID>
  <ns4:TypeCode>I16</ns4:TypeCode>
  <ns4:Declaration>
    <ns4:NationalReference>
      <ns4:ID>TIR-XF95001234</ns4:ID>
      <ns4:IssuingCountryCode>IR</ns4:IssuingCountryCode>
    </ns4:NationalReference>
  </ns4:Declaration>
</ns4:InterGov>
</ns4:DocumentMetadata>
</ns3:notificationsConfirmation>
</soap:Body>
</soap:Envelope>
```

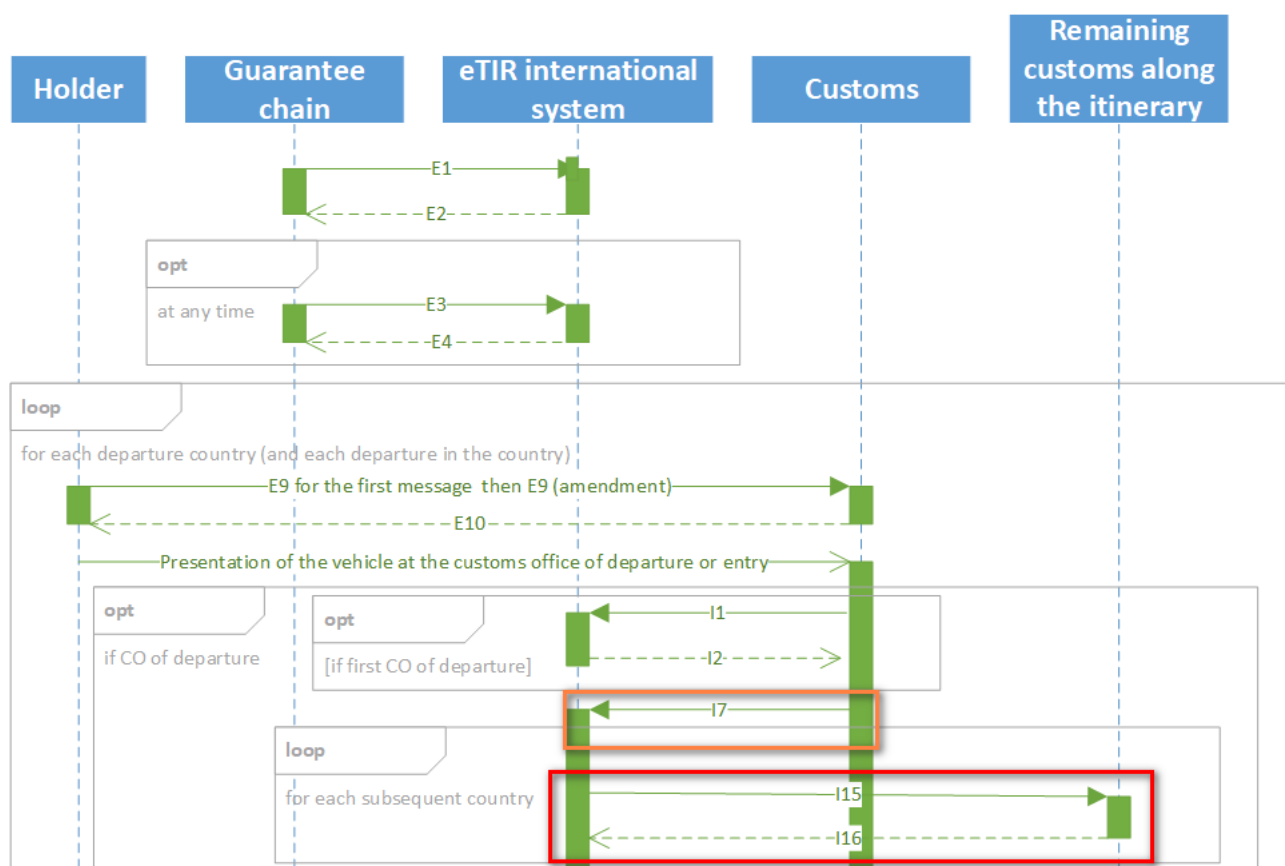


Some field original contents have been shortened (...) in this document for the sake of readability, in particular the whole **header/security** content that is described in the [eTIR web services introduction document](#).

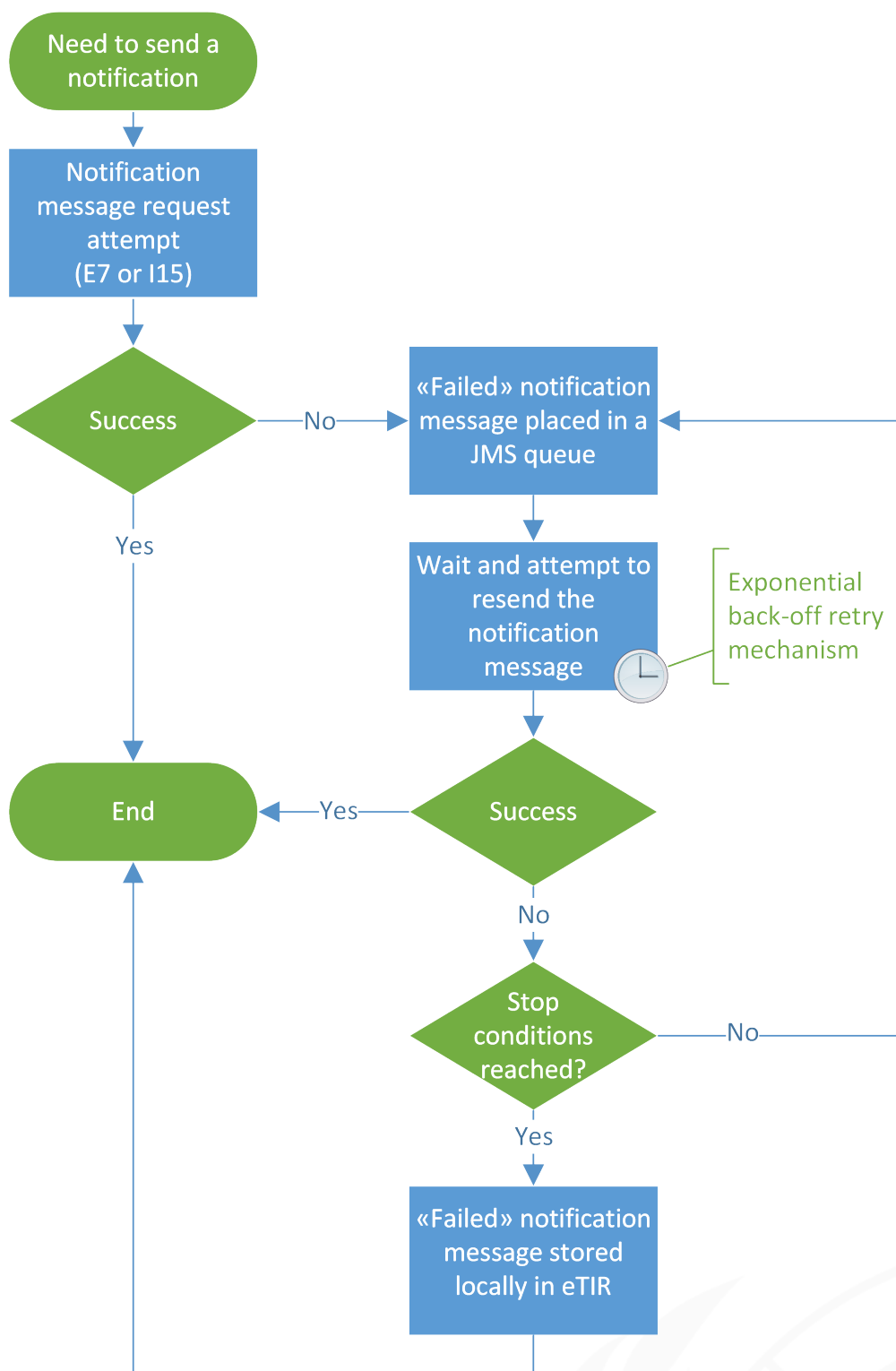
## 7. Fallback procedures

The eTIR international system features a technical fallback mechanism to ensure the best chances for all notifications to be communicated and acknowledged.

For example, in the context of the reception of the declaration data from the customs office of departure, the eTIR international system sends **I15 - Notify customs** notification message to all subsequent countries along the itinerary of the TIR transport:



The eTIR international system uses a queuing system to retry sending notifications. The diagram below illustrates this fallback mechanism:

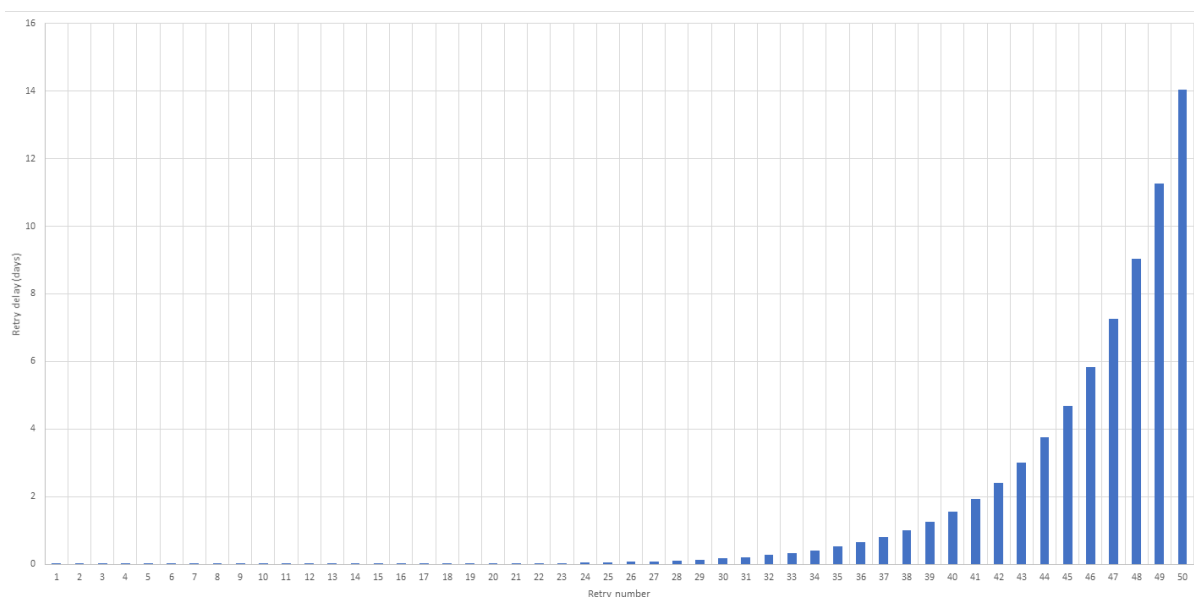


This mechanism relies on the **exponential back-off retry algorithm** allowing for progressively longer delays when retrying attempts in order to increase chances of success.

In the eTIR international system fallback mechanism case, the following parameters are used for the exponential back-off retry mechanism:

- **Delay interval:** 5
- **Maximum retry attempts:** 50
- **back-off rate:** 1.246

Based on these parameters, the chart below illustrates the extending rate of the retries:



As described in the functional fallback procedures, the eTIR international system will retry sending the notification message **I15 - Notify customs** until it succeeds in communicating it to the national customs system or if one of the stop conditions is met. One of these conditions is when 50 retries are reached, which corresponds to 15 days after having tried sending the notification the first time.

Also note that the functional fallback procedures can be found in the dedicated section of the [eTIR functional specifications](#).

## 8. Support and contact

Kindly note that in the context of the interconnections projects by customs, the eTIR service desk stands ready to assist contracting parties while interconnecting their national customs systems to the eTIR international system. Also, in case of questions or issues related to this document or to the eTIR international system, you can use the contact details below (contacts by email should be preferred).

**Organization** United Nations Economic Commission For Europe  
TIR secretariat  
Palais des Nations,  
1211 Geneva 10, Switzerland

**Contact** Email: [etir@un.org](mailto:etir@un.org)  
Phone: +41 (0)22 917 55 06

## 9. Annexes

### 9.1. Version history

Date	Author	Version	Notes	eTIR specification version reference
07/01/2021	TIR secretariat	1.0	Initial draft	4.3a
06/09/2021	TIR secretariat	1.1	Added message metadata documentation and updated URLs to point to new eTIR documentation portal	4.3.0
17/11/2021	TIR secretariat	1.2	Updated references to the newly published online code lists document	4.3.0
22/12/2021	TIR secretariat	1.3	Updated links to code lists	4.3.0
07/06/2022	TIR secretariat	1.4	Updated message description including itinerary customs office details and date formats	4.3.8
08/07/2022	TIR secretariat	1.5	Updated link to endpoints and SOAP actions	4.3.8
23/11/2023	TIR secretariat	1.6	Fix in example XML namespace definition	4.3.8

### 9.2. More examples

Please find below two additional examples of the I15 - Notify customs message showing other cases when national customs systems can be notified by the eTIR international system. Only the request messages are provided as there is no change with the response messages.

#### 9.2.1. Example 1: Notification sent when starting a TIR operation

##### I15 - Notify customs request message:

This scenario describes the case where the first TIR operation of a TIR transport is started by the customs office of departure where the seals are affixed on the transport equipments. After having sent the **I1 - Accept guarantee** and **I7 - Record declaration data** messages to the eTIR international system, the national customs system will also send the **I9 - Start TIR operation** message. The eTIR international system will detect that the seals are affixed for the first time and will then notify the remaining countries along the itinerary about this information.

The example below shows the XML data to be sent via POST method to the national customs system endpoint URL to notify each customs authorities of the countries along the itinerary when the seals are first affixed. This request message (Message function: **98 - Seals information when starting a TIR operation**) of the type **I15**, describes a change of declaration data with seals information during a Start TIR operation at customs office **GE0715** for the TIR transport related to the guarantee **XF95001234**.

##### Notification sent when seals are affixed or the first time

```
<?xml version="1.0" encoding="UTF-8"?>
<soap:Envelope xmlns:soap="http://www.w3.org/2003/05/soap-envelope">
  <soap:Header xmlns:wsa="http://www.w3.org/2005/08/addressing">
    (...)
    <wsa:Action>http://etir.org/v4.3/toCustoms/notifyCustoms</wsa:Action>
    <wsa:MessageID>uuid:980aa440-6f51-427b-880b-d43112441b6d</wsa:MessageID>
    (...)
  </soap:Header>
  <soap:Body xmlns:wsu="http://docs.oasis-open.org/wss/2004/01/oasis-200401-wss-wssecurity-utility-1.0.xsd"
    wsu:Id="id-3fd0dff2-3132-4592-9379-64e40b5081b8">
    <ns3:notifyCustoms xmlns:ns3="http://etir.org/v4.3/toCustoms" xmlns:ns4="http://etir.org/v4.3/I15"
      xmlns:ns2="http://etir.org/v4.3/DataSets" xmlns:md="
http://etir.org/v4.3/DocumentMetadata">
      <ns4:DocumentMetadata>
        <md:ResponsibleAgencyCode>AJ</md:ResponsibleAgencyCode>
        <md:AgencyAssignedCustomizationCode>1</md:AgencyAssignedCustomizationCode>
```

```

<md:AgencyAssignedCustomizationVersionCode>1</md:AgencyAssignedCustomizationVersionCode>
<md:CommunicationMetaData>
  <md:PreparationDateTime formatCode="208">20201122113346+0200</md:PreparationDateTime>
  <md:Recipient>
    <md:ID>recipientID</md:ID>
  </md:Recipient>
  <md:Sender>
    <md:ID>eTIR international system</md:ID>
  </md:Sender>
</md:CommunicationMetaData>
<ns4:InterGov>
  <ns4:Function>98</ns4:Function>
  <ns4:ID>8a864d2a-a0da-4fa2-8a6c-667b8b0a9cb1</ns4:ID>
  <ns4:TypeCode>I15</ns4:TypeCode>
  <ns4:ObligationGuarantee>
    <ns4:ReferenceID>XF95001234</ns4:ReferenceID>
    <ns4:TransitOperation>
      <ns4:SequenceNumeric>1</ns4:SequenceNumeric>
      <ns4:RegistrationID>166E035154345</ns4:RegistrationID>
      <ns4:OperationStart>
        <ns2:InspectionEndDateTime formatCode="208">20201122114547+0400
        </ns2:InspectionEndDateTime>
        <ns2:LimitDateTime formatCode="208">20201122114547+0400</ns2:LimitDateTime>
        <ns2:AdditionalInformation>
          <ns2:Content>Additional information</ns2:Content>
        </ns2:AdditionalInformation>
        <ns2:Consignment>
          <ns2:TransportEquipment>
            <ns2:ID>EC-035-RP</ns2:ID>
            <ns2:Seal>
              <ns2:SequenceNumeric>1</ns2:SequenceNumeric>
              <ns2:ID>337Z</ns2:ID>
              <ns2:TypeCode>1</ns2:TypeCode>
            </ns2:Seal>
          </ns2:TransportEquipment>
        </ns2:Consignment>
        <ns2:Control>
          <ns2:TypeCode>001</ns2:TypeCode>
          <ns2:ControlResult>
            <ns2:ID>001</ns2:ID>
          </ns2:ControlResult>
        </ns2:Control>
        <ns2:TransitOperationStartOffice>
          <ns2:ID>GE0715</ns2:ID>
        </ns2:TransitOperationStartOffice>
      </ns4:OperationStart>
    </ns4:TransitOperation>
  </ns4:ObligationGuarantee>
</ns4:InterGov>
</ns4:DocumentMetadata>
</ns3:notifyCustoms>
</soap:Body>
</soap:Envelope>

```



Some field original contents have been shortened (...) in this document for the sake of readability, in particular the content of the attached document and the whole **header/security** content that is described in the [eTIR web services introduction document](#).

## I16 - Notification confirmation response message:

The example below shows the XML data of the **I16 - Notification confirmation** message sent to the eTIR international system [endpoint URL](#), by the national customs system, in response to the POST of the **I15 - Notify customs** message received from the eTIR international system. This response

message (Function code **6 - Confirmation**) of the type **I16**, containing no error codes, describes a confirmation of the reception of the notification by the customs authorities (note that national reference information is no longer returned in this case as we are dealing with an amendment here). Therefore, it should be considered that the notification has been duly received and recorded in the national customs system.



It is important to understand that the absence of error in the **I16 - Notification confirmation** response message is the key indicator to reflect that the notification has been received and acknowledged.

#### *I16 - Notification confirmation response message*

```
<?xml version="1.0" encoding="UTF-8"?>
<soap:Envelope xmlns:soap="http://www.w3.org/2003/05/soap-envelope">
  <soap:Header xmlns:wsa="http://www.w3.org/2005/08/addressing">
    (...)
    <wsa:Action>http://etir.org/v4.3/toCustoms/notificationConfirmation</wsa:Action>
    <wsa:MessageID>uuid:256b0d3c-d220-47ed-a3bd-9b4d29289572</wsa:MessageID>
    (...)
  </soap:Header>
  <soap:Body xmlns:wsu="http://docs.oasis-open.org/wss/2004/01/oasis-200401-wss-wssecurity-utility-1.0.xsd"
    wsu:Id="id-1ee335e9-0c34-4cb4-8424-bc08601927c6">
    <ns3:notificationsConfirmation xmlns:md="http://etir.org/v4.3/DocumentMetaData" xmlns:ns3=
"http://etir.org/v4.3/toCustoms"
      xmlns:ns4="http://etir.org/v4.3/I16">
      <ns4:DocumentMetadata>
        <md:ResponsibleAgencyCode>AJ</md:ResponsibleAgencyCode>
        <md:AgencyAssignedCustomizationCode>1</md:AgencyAssignedCustomizationCode>
        <md:AgencyAssignedCustomizationVersionCode>1</md:AgencyAssignedCustomizationVersionCode>
        <md:CommunicationMetaData>
          <md:PreparationDateTime formatCode="208">20201122113346+0200</md:PreparationDateTime>
          <md:Recipient>
            <md:ID>recipientID</md:ID>
          </md:Recipient>
          <md:Sender>
            <md:ID>eTIR international system</md:ID>
          </md:Sender>
        </md:CommunicationMetaData>
        <ns4:InterGov>
          <ns4:Function>6</ns4:Function>
          <ns4:FunctionalReferenceID>8a864d2a-a0da-4fa2-8a6c-667b8b0a9cb1</ns4:FunctionalReferenceID>
          <ns4:ID>be77757d-21fa-4b7a-afa3-18f3b70c0084</ns4:ID>
          <ns4:TypeCode>I16</ns4:TypeCode>
        </ns4:InterGov>
      </ns4:DocumentMetadata>
    </ns3:notificationsConfirmation>
  </soap:Body>
</soap:Envelope>
```



Some field original contents have been shortened (...) in this document for the sake of readability, in particular the whole **header/security** content that is described in the [eTIR web services introduction document](#).

### 9.2.2. Example 2: Notification sent when terminating a TIR operation

#### **I15 - Notify customs request message:**

This scenario describes the case where seals are changed during the termination of a TIR operation, for instance when one consignment was unloaded ("partial unload"). New seals need to be affixed so that the TIR transport can continue its journey until its final destination. The national customs system will send the **I11 - Terminate TIR operation** message to the eTIR international system which will detect that the seals have changed and will then notify the remaining countries along the itinerary about this

information.

The example below shows the XML data to be sent via POST method to the national customs system endpoint URL to notify each customs authorities of the countries along the itinerary when the seals are first affixed. This request message (Function code **99 - Seals information when terminating a TIR operation**) of the type **I15**, describes a change of declaration data with seals information during a Terminate TIR operation at customs office **IR0287** for the TIR transport related to the guarantee **XF95001234**.

*Notification sent when the seals are changed during the termination of a TIR operation*

```
<?xml version="1.0" encoding="UTF-8"?>
<soap:Envelope xmlns:soap="http://www.w3.org/2003/05/soap-envelope">
  <soap:Header xmlns:wsa="http://www.w3.org/2005/08/addressing">
    (...)
    <wsa:Action>http://etir.org/v4.3/toCustoms/notifyCustoms</wsa:Action>
    <wsa:MessageID>uuid:96632844-b1a4-426b-bf1f-352b0b49ff4b</wsa:MessageID>
    (...)
  </soap:Header>
  <soap:Body xmlns:wsu="http://docs.oasis-open.org/wss/2004/01/oasis-200401-wss-wssecurity-utility-1.0.xsd"
    wsu:Id="id-250659a5-3baf-46eb-9e8a-038c5294c502">
    <ns3:notifyCustoms xmlns:ns3="http://etir.org/v4.3/toCustoms" xmlns:ns4="http://etir.org/v4.3/I15"
      xmlns:ns2=
        "http://etir.org/v4.3/DataSets" xmlns:md="http://etir.org/v4.3/DocumentMetaData">
      <ns4:DocumentMetadata>
        <md:ResponsibleAgencyCode>AJ</md:ResponsibleAgencyCode>
        <md:AgencyAssignedCustomizationCode>1</md:AgencyAssignedCustomizationCode>
        <md:AgencyAssignedCustomizationVersionCode>1</md:AgencyAssignedCustomizationVersionCode>
        <md:CommunicationMetaData>
          <md:PreparationDateTime formatCode="208">20201122113346+0200</md:PreparationDateTime>
          <md:Recipient>
            <md:ID>recipientID</md:ID>
          </md:Recipient>
          <md:Sender>
            <md:ID>eTIR international system</md:ID>
          </md:Sender>
        </md:CommunicationMetaData>
        <ns2:InterGov>
          <ns2:Function>99</ns2:Function>
          <ns2:ID>8a864d2a-a0da-4fa2-8a6c-667b8b0a9cb1</ns2:ID>
          <ns2:TypeCode>I15</ns2:TypeCode>
          <ns2:ObligationGuarantee>
            <ns2:ReferenceID>XF95001234</ns2:ReferenceID>
            <ns2:TransitOperation>
              <ns2:SequenceNumeric>1</ns2:SequenceNumeric>
              <ns2:RegistrationID>16GE035154345</ns2:RegistrationID>
              <ns2:OperationTermination>
                <ns2:InspectionEndDateTime formatCode="208">20201122114547+0400</ns2:InspectionEndDateTime>
                </ns2:InspectionEndDateTime>
                <ns2:PackageQuantityQuantity>10</ns2:PackageQuantityQuantity>
                <ns2:TypeCode>01</ns2:TypeCode>
                <ns2:Consignment>
                  <ns2:TransportEquipment>
                    <ns2:ID>EC-035-RP</ns2:ID>
                    <ns2:Seal>
                      <ns2:SequenceNumeric>1</ns2:SequenceNumeric>
                      <ns2:ID>HET47</ns2:ID>
                      <ns2:TypeCode>1</ns2:TypeCode>
                    </ns2:Seal>
                  </ns2:TransportEquipment>
                </ns2:Consignment>
                <ns2:Control>
                  <ns2:TypeCode>001</ns2:TypeCode>
                  <ns2:ControlResult>
                    <ns2:ID>001</ns2:ID>
                  </ns2:ControlResult>
                </ns2:Control>
              </ns2:OperationTermination>
            </ns2:TransitOperation>
          </ns2:ObligationGuarantee>
        </ns2:InterGov>
      </ns3:notifyCustoms>
    </soap:Body>
  </soap:Envelope>
```



```

</ns2:ControlResult>
</ns2:Control>
<ns2:TransitOperationTerminationOffice>
  <ns2:ID>IR0287</ns2:ID>
</ns2:TransitOperationTerminationOffice>
</ns2:OperationTermination>
</ns2:TransitOperation>
</ns2:ObligationGuarantee>
</ns2:InterGov>
</ns4:DocumentMetadata>
</ns3:notifyCustoms>
</soap:Body>
</soap:Envelope>

```



Some field original contents have been shortened (...) in this document for the sake of readability, in particular the content of the attached document and the whole **header/security** content that is described in the [eTIR web services introduction document](#).

## I16 - Notification confirmation response message:

The example below shows the XML data of the **I16 - Notification confirmation** message sent to the eTIR international system [endpoint URL](#), by the national customs system, in response to the POST of the **I15 - Notify customs** message received from the eTIR international system. This response message (Function code **6 - Confirmation**) of the type **I16**, containing no error codes, describes a confirmation of the reception of the notification by the customs authorities (note that national reference information is no longer returned in this case as we are dealing with an amendment here). Therefore, it should be considered that the notification has been duly received and recorded in the national customs system.



It is important to understand that the absence of error in the **I16 - Notification confirmation** response message is the key indicator to reflect that the notification has been received and acknowledged.

## I16 - Notification confirmation response message

```

<?xml version="1.0" encoding="UTF-8"?>
<soap:Envelope xmlns:soap="http://www.w3.org/2003/05/soap-envelope">
  <soap:Header xmlns:wsa="http://www.w3.org/2005/08/addressing">
    (...)
    <wsa:Action>http://etir.org/v4.3/toCustoms/notificationConfirmation</wsa:Action>
    <wsa:MessageID>uuid:256b0d3c-d220-47ed-a3bd-9b4d29289572</wsa:MessageID>
    (...)
  </soap:Header>
  <soap:Body xmlns:wsu="http://docs.oasis-open.org/wss/2004/01/oasis-200401-wss-wssecurity-utility-1.0.xsd"
    wsu:Id="id-1ee335e9-0c34-4cb4-8424-bc08601927c6">
    <ns3:notificationsConfirmation xmlns:md="http://etir.org/v4.3/DocumentMetaData" xmlns:ns3=
      "http://etir.org/v4.3/toCustoms"
      xmlns:ns4="http://etir.org/v4.3/I16">
      <ns4:DocumentMetadata>
        <md:ResponsibleAgencyCode>AJ</md:ResponsibleAgencyCode>
        <md:AgencyAssignedCustomizationCode>1</md:AgencyAssignedCustomizationCode>
        <md:AgencyAssignedCustomizationVersionCode>1</md:AgencyAssignedCustomizationVersionCode>
        <md:CommunicationMetadata>
          <md:PreparationDateTime formatCode="208">20201122113346+0200</md:PreparationDateTime>
          <md:Recipient>
            <md:ID>recipientID</md:ID>
          </md:Recipient>
          <md:Sender>
            <md:ID>eTIR international system</md:ID>
          </md:Sender>
        </md:CommunicationMetadata>

```

```
<ns4:InterGov>
  <ns4:Function>6</ns4:Function>
  <ns4:FunctionalReferenceID>8a864d2a-a0da-4fa2-8a6c-667b8b0a9cb1</ns4:FunctionalReferenceID>
  <ns4:ID>be77757d-21fa-4b7a-afa3-18f3b70c0084</ns4:ID>
  <ns4:TypeCode>I16</ns4:TypeCode>
</ns4:InterGov>
</ns4:DocumentMetadata>
</ns3:notificationsConfirmation>
</soap:Body>
</soap:Envelope>
```



Some field original contents have been shortened (...) in this document for the sake of readability, in particular the whole **header/security** content that is described in the [eTIR web services introduction document](#).